

MILTON 

# Parks AND Activities Guide

# Fall/Winter 2022 | Spring 2023



p.7

**YOUTH ATHLETICS**



p.14

**PROGRAMS, ACTIVITIES, & EVENTS**



p.17

**PARKS & FACILITIES**

# Table of Contents

Welcome to Milton	3
Mayor and Director's Messages	4
Parks and Recreation Team	5
How to Register	6
Youth Athletics	
Hopewell Youth Association	7
Eagle Stix	8
North GA Recreation	8
Halftime Sports	9
NAFL	9
Fine Arts	
Rhythm N Shoes	10
The Photo Creative	10
Wellesong Tai Chi	11
Adult Programming	
Milton Tennis Center	12
Rush Union	12
YMCA	12
Other Recreational Programs	
Love GOGA	13
GGLeagues	13
Additional Programs, Activities, and Events	14
Parks & Facilities	17

# Welcome to Milton

The City of Milton's Parks and Recreation Department develops and maintains parks and recreational offerings that draw visitors and enhance the well-being of Milton residents. The City has several parks for "active" use with fields, playgrounds, trails, and other amenities. Milton's Parks and Recreation Department partners with providers for various athletic and arts programs run out of these "active" facilities as enriching opportunities for residents. The Department also maintains several popular "passive" parks where visitors can hike, fish, and generally enjoy the great outdoors.

Additionally, the Parks and Recreation Department includes Community Outreach – an integral part of the City government involved in coordinating and carrying out big and small City-sponsored events, holiday festivities, community programs, and more. Several such events are run together with area businesses, local non-profit organizations, and community groups. These special events further unite and strengthen the sense of community and belonging in Milton.

This Parks and Activities Guide aims to open eyes to some of the many things our City has to offer for people to play, connect, exercise their bodies and minds, enjoy the outdoors, and be part of our community. It will be updated seasonally, with changing registration options, activities, and more!



## The City of Milton Way

### Vision

Milton will be a city recognized for its exceptionally high quality of life, strong sense of place and community, and dedication to preserving our rural heritage.

### Values

- "Together We Thrive"
- "It's All About Our Rural Heritage"
- "Service Is Our Obsession"
- "Own It, Deliver It"
- "Lead From The Front"

You can follow what's happening, and engage with us, through the following...

[facebook.com/thecityofmiltonga](https://facebook.com/thecityofmiltonga)



[instagram.com/cityofmiltonga](https://instagram.com/cityofmiltonga)

[twitter.com/cityofmiltonga](https://twitter.com/cityofmiltonga)



[info@cityofmiltonga.us](mailto:info@cityofmiltonga.us)

[youtube.com/user/CityofMiltonGeorgia](https://youtube.com/user/CityofMiltonGeorgia)



[www.cityofmiltonga.us](https://www.cityofmiltonga.us)

# Introductions

## Mayor's Message

---

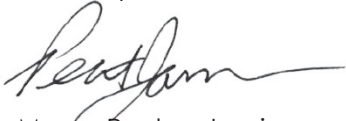
Milton is home to a growing number of parks, fields, trails, and facilities – as well as people, young and old, who enjoy them. As Milton's Mayor, I'm privileged to welcome you to these and to the many terrific recreational programs that call them home.

This guide gives you a taste of ways you can play, exercise, learn, belong, and then some here in Milton. It covers the "school year," when our courts and fields tend to be packed with athletes training, competing, and working together as part of a team. In addition to loving our sports, our city loves the arts, too.

In the past year, we've opened several greenspaces for those who love getting outside, including one off Lackey Road and the first Milton City Park and Preserve (MCP) trail. Providence Park and Birmingham Park have also been upgraded. Meanwhile, several "active" spaces have been transformed like the turfing of the fields at the Cox Road athletic complex and the opening of the special Community Center at MCP off Dinsmore Road.

Now is a great time to be in Milton. And we're excited for you to be part of it, with help from our Parks and Recreation Department.

Sincerely,



Mayor Peyton Jamison



## Message from the Parks and Recreation Director

---

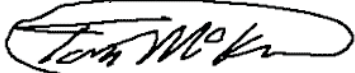
As the director of Milton's Parks and Recreation Department, I'm happy and honored that you've turned to us – and to this publication – to dive into what we have to offer.

We work hard to make our city a great place to get out and play whether you participate on our athletic teams, create through our arts programs, or hike on our terrific trails. This Parks and Activities Guide is a prime opportunity for us to showcase our offerings in a handy, easy-to-follow place.

We plan to do two such guides annually. One focuses on camps and the like happening over our summer. This edition covers the rest of the year, when people can join teams, take classes, keep fit, create art, and – most importantly – have fun doing it all!

Of course, there's more to Milton Parks and Rec than just this guide. We encourage you to go to [www.miltonga.gov/government/parks-rec](http://www.miltonga.gov/government/parks-rec) to explore more. There you can find ways to contact my colleagues and I with questions, suggestions, or general thoughts. We welcome feedback, as our parks and programs all aim to make Milton even better for you, your family, and your neighbors to live and play.

Thank you,



Tom McKlveen



# Meet the Team

## City Staff

Milton's City staff works diligently to provide quality parks and programs for our community. Headquartered at City Hall, the Parks and Recreation Department is small but mighty and singularly focused on serving our community. So, too, are the elected officials, contracted partners, and committee members who are critical in the entire effort's success.

Here are the professionals in Milton's Parks and Recreation Department:

Parks and Recreation Director:  
**Tom McKlveen**  
tom.mcklveen@miltonga.gov

Parks & Recreation Coordinator  
**Matthew Graney**  
matthew.graney@miltonga.gov

Parks and Recreation  
Program Supervisor:  
**Thomas Rhodes**  
thomas.rhodes@miltonga.gov

Community  
Outreach Manager  
**Maddy Post**  
maddy.post@miltonga.gov

If you're not sure whom to email,  
contact [parksandrec@miltonga.gov](mailto:parksandrec@miltonga.gov)

## Parks and Recreation Advisory Board (PRAB)

The Parks and Recreation Advisory Board guides City staff, the Mayor, and City Council members about needs, wants, and advice pertaining to parks facilities and recreation activities in Milton. The Board recommends rules, policies, and programs for children and adults to ensure safety as well as optimal use and enjoyment for Milton citizens. PRAB also assists in defining fiscal policies that are fair, effective, and necessary to fund programs and maintain facilities. Stop by Council Chambers on the third Thursday of every month to attend a PRAB meeting and meet the board members!

### Board Members

**Scott Stachowski**  
Chair  
District 3/Post 1  
Appointed by Jan Jacobus

**Stephanie Butler**  
At-Large  
Appointed by  
Mayor Peyton Jamison

**Phil Cranmer**  
Vice Chair  
District 3/Post 2  
Appointed by Rick Mohrig

**Allison Katula**  
District 1/Post 1  
Appointed by Andrea Verhoff

**Joey Costanzo**  
Secretary  
District 2/Post 2  
Appointed by Paul Moore

**Morgan Van Gelder**  
District 1/Post 2  
Appointed by Carol Cookerly

**Jason Alberici**  
District 2/Post 1  
Appointed by Juliette Johnson



In 2021, the Georgia Recreation and Parks Association honored Milton as Agency of the Year for its 7th District! This award recognized the transformative changes made in the department over the previous 12 months, including but not limited to a leadership change, new programs and partnerships, and greenspace initiatives. Milton proudly participates in GRPA's conferences, grant programs, and trainings and certifications.

## Other Department Collaborators

Our Parks and Recreation team is not complete without input and engagement from other collaborators like the Milton Equestrian Committee and the Milton Land Conservancy. These groups, along with countless others, work to ensure all voices in our community are heard.

# Fall Programming

Looking for fun, enriching, and enjoyable activities for children this summer? Thankfully, the City of Milton – in partnership with some of the best recreational providers around – offer a number of great options to keep kids active, engaged, and happy.

Below you'll find the various "Summer Camp" opportunities to be held at City of Milton facilities. Some information is still to come, so check the websites mentioned for details. (And this is not all Milton's Parks and Recreation programming this summer; later in this guide, you'll find "Seasons and Sessions" section with activities that occur on a weekly basis or as part of ongoing leagues.)

## How To Register

Below, you'll find most dates, locations, and other details for Milton's summer camps. Signing up for programs and activities is a fully online process. Links and more info for each one can be found at [www.miltonga.gov/Registration](http://www.miltonga.gov/Registration). Generally, registration for these camps opens on February 15 with each program having its own closing date. (So sign-up early!) Activities will begin in early June soon after Memorial Day.

For some camps, you'll need to register through the City of Milton's recreation software, CivicRec. You'll start by creating an account, then pick which camp you want. Several of the program providers, though, require people to register on their own websites. Links to those programs' websites can be found below.

The prices for each camp vary; consult the aforementioned websites for those details. For all the items below, Milton residents qualify for the lower "resident" rate. (even, in a few cases, for programs happening in Alpharetta because of an agreement between the two cities).

The screenshot shows the City of Milton website header with the logo "MILTON EST 2006" and a horse icon. On the right, there are links for CAREERS, CALENDAR, MAPS, NEWS, and A-Z INDEX. Below the header is a dark navigation bar with links for GOVERNMENT, RESIDENTS, BUSINESS, PARKS & REC, FORMS & PERMITS, CONTACT, and I WANT TO... The main content area features a "Log In/Create Account" button, a "Catalog" button, and a "Policies" and "Help" link. A "Cart Empty" notification is visible. A grid of activity categories is shown with counts: Dance (4), Tai Chi (2), Photography (0), eSports (0), GOGA (0), Mindfulness (0), Baseball (0), Basketball (0), Football (0), Lacrosse (0), Tennis (0), Adult Soccer (0), Swim Team (0), Swim Lessons (0), Rent a Facility (8), Tennis Court Rental (4), Rent an Athletic Field (0), and Pool Passes (6). Below this grid, a section titled "YOUTH DANCE CLASSES & CAMPS" is visible, with a link for "Rhythm N' Shoes Dance".

[www.miltonga.gov/Registration](http://www.miltonga.gov/Registration)

# Youth Athletics

## Hopewell Youth Association

Hopewell Baseball - All Programs can be registered for at [www.hopewellbaseball.org](http://www.hopewellbaseball.org)

### 2022 Winter Program – Indoor at Windward Baseball Academy

- Registration Opens - 10/1/22
- Registration Closes 11/1/22
- Cost - \$175
- Hitting, Pitching and Field Development Focused Clinic Style Program
- Sessions start Nov.7, 22 and will have several sessions available on each day
- Players attend 5 sessions on same day and at same time each week

### 2023 Spring Recreation and Select Baseball

- Early bird registration - Base Cost with \$25 Discount
  - Opens 10/31/22
  - Closes 12/12/22
- Regular Registration - Base Cost
  - Opens 12/12/22
  - Closes 1/3/23
- Late Registration - Base Cost + \$25 Late Fee
  - Opens 1/3/23
  - Closes 1/10/23
- Assessments - 1/21 and 1/22 or 1/28 and 1/29
- Practices Start - Feb 4 or Feb 11
- Opening Day - March 4
- Championship Saturday - End of Season - May 13
- Age Groups Offered - Base Cost for Program
  - Mini-Hitters - \$125
  - 5U - \$185
  - 6U - \$185
  - 7U - \$185
  - 8U - \$200
  - 9U/10U - \$225
  - 11U-13U - \$235
  - 13U-16U - \$235

### 2023 Summer Camps

- Registration Opens - 3/1/23
- Registration Closes Friday Before Camp
- 4 Days - 9 AM - 1 PM
- Work on all aspects of baseball.
- Cost - \$200
- Weeks Offered
  - Week 1 - June 5 - June 8
  - Week 2 - June 19 - June 22
  - Week 3 - July 10 - July 13
  - Week 4 - July 24 - July 27



# Youth Athletics



## Eagle Stix

In the fall season, Eagle Stix will offer Rec and Elite programs for girls in Pre-K through high school, beginning in mid-August and ending in early November.

### Who can participate:

#### Spring Season:

Eagle Stix offers Rec and Select programs for girls in Pre-K through 8th grade.

#### Summer Season:

Eagle Stix will offer summer camps for girls K-8, along with instructional clinics, and Elite programs for grades 3-12.

### How to register:

For More information, go to [www.EagleStixLax.com](http://www.EagleStixLax.com) or email [EagleStixLax@gmail.com](mailto:EagleStixLax@gmail.com)



## North GA Recreation

North GA Rec partners with Talons Lacrosse ([www.miltonboyslacrosse.com/](http://www.miltonboyslacrosse.com/)) for those districted to Milton HS and Cambridge Youth Lacrosse ([www.cambridgeyouthlax.com/](http://www.cambridgeyouthlax.com/)) those districted for Cambridge HS to offer Spring Lacrosse. The season starts in early February and runs until early May. Teams practice twice a week and play one or two games each weekend. Open for boys grades 1-8. More information and registration on the Cambridge and Talons website.

### Dates:

**Fall Season:** August - November

**Spring Season:** January - May

### Location:

We will host practices and games at Bell Memorial Park, Cox Road Facility and local school fields.

### Who can participate:

1st grade - 8th grade

### How to register:

[www.northgeorgiarec.com](http://www.northgeorgiarec.com)





# Youth Athletics

## Halftime Sports

Most exciting Winter Recreation Basketball League in the South

### Dates:

December 3, 2022 - February 25, 2023  
Evaluations: Mid October

### Location:

Mill Springs Academy  
13660 New Providence Rd, Alpharetta, GA 30004

### Who can participate:

Boys and Girls: K-12th grade  
Divisions: K/1st grade; 2nd/3rd Grades; 4th-5th Grades;  
6th-7th Grades; 8th-9th Grades; High School (10th – 12th Grades)  
High School teams select their own teams (players)

### How to register:

[www.halftimesports.net](http://www.halftimesports.net)



## NAFL

The North Atlanta Football League (NAFL) runs Milton's youth football and cheerleading programs on our artificial turf fields at Bell Memorial Park. This fall, NAFL offers Recreational Flag Football for entry-level football players or players looking to sharpen their football skills, and a Tackle Football Division that offers the full football experience of the gridiron. In addition, NAFL proudly offers cheerleading to kids of all skill levels, from beginners to advanced.

### Dates:

July 2022 to November 2022

### Registration:

Opens March 1st  
Closes June 15th  
[www.NAFL.club](http://www.NAFL.club)

### Time:

2-3 evening practices per week,  
and 1 game on Saturdays.

### Location:

Bell Memorial Park Field 1 and North Park Field 1 and 2

### Who can play:

**Flag Football:** K-5th grades  
**Tackle Football:** 2nd-5th grades  
**Cheerleading:** K-5th grade

### Registration:

Opens March 1st  
Closes June 15th  
[www.NAFL.club](http://www.NAFL.club)



# Fine Arts



## Rhythm N' Shoes

Get movin' with Rhythm N' Shoes, Milton's youth dance provider. Peri Sanders, the owner and dance instructor, has been teaching in the Milton area for many years. She offers a variety of classes including ballet, tap, and hip hop classes.

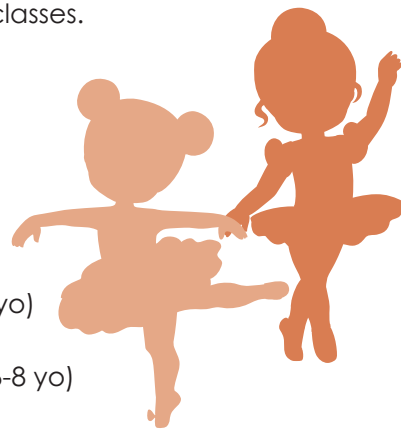
**Dates:** Thursdays  
Fall 9/8-11/10  
Winter 12/1-2/16  
Spring 3/9-5/18

**Time:**  
3:30-4:15 Preballet/Tap (3-5 yo)  
4:15-5:00 Beginning Ballet/Tap (4-6 yo)  
5:00-5:45 Mini Hip Hop/Jazz (5-7 yo)  
5:45-6:30 Beginning Hip Hop/Jazz (6-8 yo)

**Location:**  
Milton Community Center at Milton City Park and Preserve

**Who can participate:**  
Children ages 3-8

**How to register:**  
<https://secure.rec1.com/GA/city-of-milton/catalog>  
Click on the **Dance** tab



## The Photo Creative

Join our dedicated team at The Photo Creative to learn the basics – and the fun – of photography. The instructors have been working as professional photographers in the field for over 15 years. Kids will learn exciting, hands-on technical skills, dig into some cool projects, and much more.

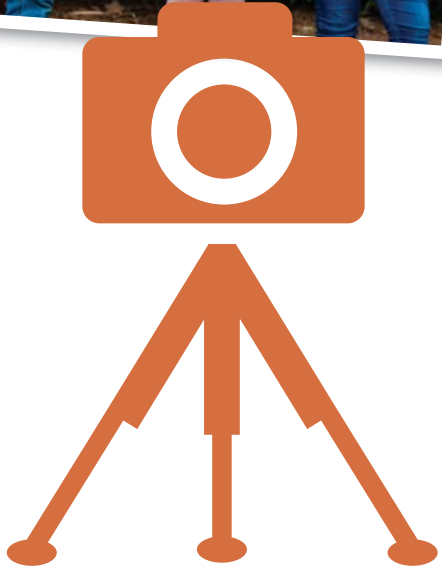
**Dates/Time:**  
View the Milton Parks and Recreation catalog for the most up-to-date information!

**Location:**  
Community Place at Milton City Hall

**Who can participate:**  
**Weeklong camps**  
• 10-14 year-olds

**2-day camps**  
• 6-9 year olds

**How to register:**  
<https://secure.rec1.com/GA/city-of-milton/catalog>  
Click on the **Photography** tab



# Fine Arts

## Wellesong Tai Chi

Wellesong, the City of Milton's Tai Chi provider, offers classes to help build strength, flexibility, and balance through this ancient martial art. Often called "meditation in motion," Tai Chi is a gentle, yet powerful way to engage the mind, body, and spirit with fluid, focused movements. The classes are a wonderful way to meet new friends in the community who share your interest in staying well and strong. Join us to experience how Tai Chi might just become the most enjoyable activity you do to help reach your personal wellness goals!

Visit Wellesong at [wellesong.com](http://wellesong.com) for more information regarding course content.

### Dates

#### Fall Session 1

Beginner Yang Style 24 Form (Part I)  
Mondays, September 12 - October 24 (no class 10/10)

#### Fall Session 2

Beginner Yang Style 24 Form (Part II)  
Mondays, October 31 - December 12 (no class 11/21)

#### Winter Session

Foundations Tai Chi (Part I)  
Mondays, January 9 - February 27 (no class 1/16; 2/20)

#### Spring Session

Foundations Tai Chi (Part II)  
Mondays, March 20 - May 1 (no class 4/03\*\*)

\*\*note: "no class" days reflect holidays and breaks listed on area school calendars

### Time:

10am - 11am

### Location:

Milton Community Center Fitness Room

### Who can participate:

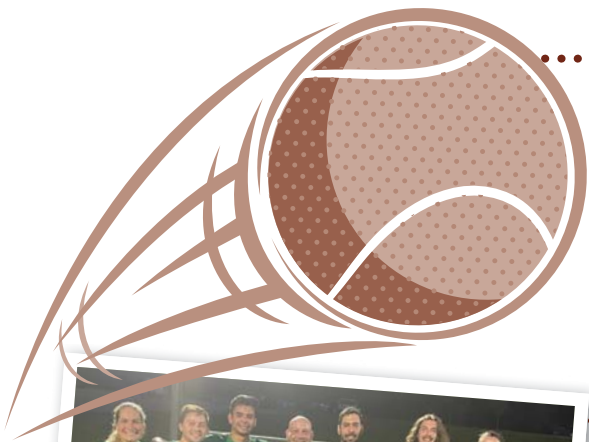
Everyone age 18 and up

### How to register:

<https://secure.rec1.com/GA/city-of-milton/catalog>  
Click on the **Tai Chi** tab



# Adult Programming



## Milton Tennis Center

If you are interested in joining an ALTA team, please email Coach Terre for team availability for 2022 Adult and Junior Fall ALTA

**Email:**  
[terreob@bellsouth.net](mailto:terreob@bellsouth.net)

## Rush Union Adult Soccer

Milton offers co-ed adult soccer leagues through an exciting partnership with Rush Union. Rush joined with Milton in 2020 and has multiple successful divisions. Rush Union adult league teams play on City of Milton fields, either at Legacy Park or Bell Memorial Park.

**Dates:**  
Fall season will be from 9/12 – 11/14 (no games the week of 10/31).

**Time:**  
7:30 – 10:30 PM Mondays (11 v 11) and Wednesdays (7 v 7)

**Location:**  
Cox Road Athletic Complex

**Who can participate:**  
Ages 18 and up

**How to register:**  
<https://secure.rec1.com/GA/city-of-milton/catalog>  
Click on the **Adult Soccer** tab

## Group Exercise

Group Exercise coming this fall in partnership with the Ed Isakson/ Alpharetta Family YMCA. Adult Bootcamp, Zumba, and Yoga will be offered weekly.

**Dates/Time:**  
View the Milton Parks and Recreation catalog for the most up-to-date information!

**Location:**  
Milton Community Center at Milton City Park and Preserve

**How to register:**  
<https://secure.rec1.com/GA/city-of-milton/catalog>  
Click on the **Group Exercise** tab (coming soon)



# Adult Programming



## Group Exercise

Looking for a great way to stay active close to home? You can take group exercise classes, through the YMCA, at Milton City Park and Preserve's Community Center. Register by the month to participate. The cost for each class will be \$60 per month for Milton residents and YMCA members..

### Dates:

Monday/Wednesday Zumba 9-10 a.m.

Monday/Wednesday Bootcamp 1- 2 p.m.

### Location:

Milton Community Center Fitness Room

### Who can participate:

Ages 18 and up

### How to register:

Go to [ymcaatlanta.spiritplus.net/SpiritWeb/Login](https://ymcaatlanta.spiritplus.net/SpiritWeb/Login) and use Class ID 543094 to register, or:

Go to [www.miltonga.gov/registration](https://www.miltonga.gov/registration) and click on the Group Exercise tab



# Other Recreational Programs

## Goat Yoga

Love GOGA, provided by the Atlantis Dream Farm, gives Milton a unique yoga experience. Love GOGA provides the goats and leaves you with a great workout and fun memories. These classes have traditionally taken place at the City's Broadwell Pavilion.

### Dates/Time:

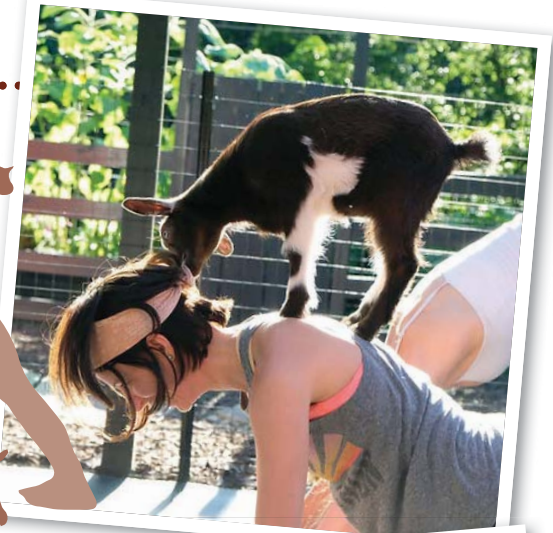
View the Milton Parks and Recreation catalog for the most up-to-date information!

### Location:

Broadwell Pavilion

### How to register:

<https://secure.rec1.com/GA/city-of-milton/catalog>  
Click on the **GOGA** tab



## GGLeagues (eSports)

eSports is a unique way to play video games against your peers locally and nationwide. GGLeagues has partnered with Milton to create a City eSports League, in combination with many other towns and cities in Georgia. People play out of their own homes, though the City of Milton does help facilitate the program.

### Dates

Fall league coming soon!

### Games offered

#### Madden22

- Xbox Series S/X
- PlayStation 5

#### Rocket League (Beginner or Competitive)

- 1v1
- 3v3

#### Super Smash Bros (Nintendo Switch)

- 1v1

#### Mario Kart 8 Deluxe (Nintendo Switch)

- 1v1

### Time:

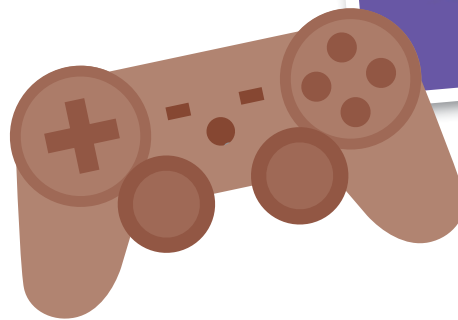
7 p.m. – 10 p.m.

### Who can participate

- Youth: 8-12
- Teen: 13-18
- Adult: 18 years and older

### How to register:

<https://secure.rec1.com/GA/city-of-milton/catalog>  
Click on the **eSports** tab



# Additional Programs, Activities and Events

## Crabapple Fest

Tens of thousands typically flock to downtown Milton for the City's famed arts, antique and gift festival. You can shop from over 100 local vendors, try out food trucks, and take part in activities.

**Dates:**  
Saturday, October 1

**Time:**  
10 a.m. to 5 p.m.

**Location:**  
Downtown Crabapple, Milton, GA 30004



## Carvin' in Crabapple

Children carve their jack-o'-lantern (you bring the pumpkin, the City provides the tools), create complimentary crafts, play games, get their face painted and more at this Halloween-themed event.

**Dates:**  
Sunday, October 23

**Time:**  
2 p.m. to 5 p.m.

**Location:**  
Broadwell Pavilion - 12615 Broadwell Road, Milton, GA 30004



## Veteran's Day Breakfast

The City welcomes military veterans from all around Milton to this special event at City Hall, featuring a breakfast, guest speaker, camaraderie with fellow vets, and appreciation for your service. Email [maddy.post@miltonga.gov](mailto:maddy.post@miltonga.gov) to participate.

**Dates:**  
Saturday, November 5

**Time:**  
8 a.m. to 9 a.m.

**Location:**  
City Hall  
2006 Heritage Walk, Milton, GA 30004



# Additional Programs, Activities and Events

## Christmas in Crabapple/Tree Lighting

Broadwell Pavilion in downtown Crabapple becomes the holiday epicenter with a ceremonial tree lighting, caroling, s'mores, crafts, hot cocoa, and a visit from Santa Claus himself.

**Dates:**

Saturday, December 3

**Time:**

2 p.m. to 6 p.m.

**Location:**

Broadwell Pavilion - 12615 Broadwell Road, Milton, GA 30004



## Pancakes with Santa

Santa will also make a pit stop (before traversing the world) at Fire Station 44 for our annual Pancake Breakfast. Children can pose for photos with him when not eating a firefighter-provided breakfast.

**Dates:**

Saturday, December 10

**Time:**

8 a.m. to 10 a.m.

**Location:**

Fire Station 44 – 13690 Hwy 9, Milton, GA 30004



## Citizens Government Academy

Over 8 weeks, participants will get a hands-on, up-close view of all aspects of Milton's government -- listening and posing questions to those who lead it -- at facilities all around the city.

**Dates:**

Feb-March

**Time:**

Evenings

**Location:**

Various Locations - Milton, GA 30004





# Parks and Facilities

The City of Milton owns and maintains numerous active parks and facilities - used for sports and other programs and activities - as well as passive preserves, where people enjoy nature without development, fields, or buildings. All of these parks and facilities belong to Milton residents and serve as great showcases of the city's love of the outdoors.

Citizens, businesses, and organizations can rent some of the facilities. Those that are available for rent are marked below with an \* (asterisk). To do so, go to [www.cityofmiltonga.us/Registration](http://www.cityofmiltonga.us/Registration), and click "Rent a Facility." There you'll see the rates for that facility and more details.



## List of Parks and Facilities

### Bell Memorial Park



- 15245 Bell Park Road
- Bell Memorial has four baseball fields, two multi-purpose artificial turf fields, pavilions, picnic areas, parking, concessions, and a playground. It is routinely used by various athletic programs (including baseball and lacrosse), families and others looking for a great place to exercise and connect.

### Bethwell Community Center (temporarily unavailable)

- 2695 Hopewell Road
- The Bethwell Community Center is a small, indoor space that houses the City of Milton's Parks and Recreation programs, activities, and summer day camp. It is a great place for private or group rentals. Bethwell Community Center features a kitchenette with a fridge, freezer, sink, and microwave. There is also small playground and green space on the property. The building itself is temporarily unavailable, as it's being used by the Milton Fire-Rescue Department while Station 42 is rebuilt.

### Birmingham Park



- 750 Hickory Flat Road
- Birmingham Park is a great place to escape into nature. The park features seven multi-use, natural surface trails that will take you deep into your own backyard. Birmingham Park is utilized by outdoor enthusiasts, including equestrians and hikers.



# Parks and Facilities

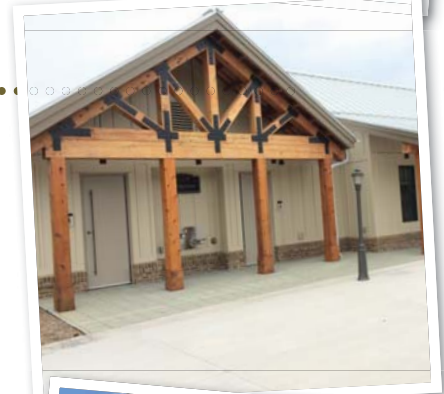
## Broadwell Pavilion **RENT**

- 12615 Broadwell Road
- The Broadwell Pavilion features a 40-foot by 52-foot open pavilion with picnic tables and restrooms. The Pavilion is home to City events like the Milton Hometown Jubilee and Christmas in Crabapple. It also hosts private birthday parties, weddings, and other celebrations. Just outside of the Pavilion, you will find a small green space and playground.



## City Hall - Community Place **RENT**

- 2006 Heritage Walk
- Community Place is located on the grounds of Milton City Hall. It comes with a computer and projector capable of hosting small meetings and gatherings. Just outside you will find restrooms, seating, and the bustling downtown Crabapple area.



## Legacy Park **RENT**

- 170 Cox Road
- Cox Road Athletic Complex features three artificial turf fields that were recently completed in August 2022 for recreational use. It is used for soccer, lacrosse, football, baseball and other active sports. This facility can also be rented out when not in use by Milton Parks & Recreation programs.



## Milton City Park and Preserve **RENT TRAILS** (with Community Center, Tennis Center and Pool)

- 1785 Dinsmore Road
- The Milton City Park and Preserve is part of the former Milton Country Club property. It contains the courts that make up the Milton Tennis Center, the City Pool, as well as a recently renovated community and recreation center that had once been a clubhouse. Courts at the Tennis Center are available for rent, while the renovated clubhouse may be available for rent in the coming months.



# Parks and Facilities



## Freedom Park **TRAILS**

- 13200 Deerfield Parkway
- Freedom Park is a small park tucked in the corner of the East Milton in an area known as Deerfield. It features a small, paved walking path and outdoor workout equipment. The park is home to a memorial that honors those who have served in our Armed Forces.



## Friendship Community Park **RENT TRAILS**

- 12785 Birmingham Highway
- Friendship Community Park is a joint venture with the Fulton County School System. Located between Crabapple Crossing Elementary and Northwestern Middle School, it features a picnic pavilion, walking path, half-court basketball, and play field. During school hours, Friendship Park is closed to the public. It opens after school hours and closes at dusk.



## Lackey Road Greenspace **TRAILS**

- 990 Lackey Road
- The Lackey Road Greenspace features 1.5 miles in wooded trails on a 106-acre property that the City purchased in 2018 as part of the Greenspace Bond program. This picturesque southwest Milton property - formerly owned by the Wolff family - is set off a rural gravel road that includes winding and rolling hiking trails. Starting at a gravel parking lot that holds about 15 cars, visitors walk alongside (and, in some cases, over) bubbling creeks, watch cows munching in an adjoining pasture, traverse through dense forest, and enjoy views of a large pond.

# Parks and Facilities

## Mayfield Park **TRAILS**

- 1000 Mayfield Road
- This 5-acre property sits along Mayfield Road next to the Lakeside at Crabapple neighborhood, just north (and on the opposite side of the street) of Milton Library. That subdivision's developer, Taylor Morrison, created the retention pond, walking and seating areas, and more before turning it over to the City of Milton in late 2020. This park sits in downtown Crabapple, within walking distance of many restaurants, shops & offices, as well as several schools. It features a pier, pavilion, and walking trails.



## Providence Park **TRAILS**

- 13440 Providence Park Drive
- Providence Park is a nature-lover's haven in the heart of Milton. Every day, runners, walkers, dogs and even fishermen enjoy its 42 heavily wooded acres, parts of which overlook Providence Lake. On the lake there is a fishing pier for the public to enjoy. There are three trails at the park, including a .5 mile loop trail that is paved and ADA accessible.



## Thomas S. Byrd Senior House

- 15690 Hopewell Road
- One of the most historic properties in Milton, the Byrd House is a nearly 4,000-square-foot, two-story home that dates back at least to the mid-1800s. The building sits on 2.5 acres and serves as the home for Milton Senior Services.



MILTON 

# Parks AND Activities Guide



Fall/Winter 2022 | Spring 2023