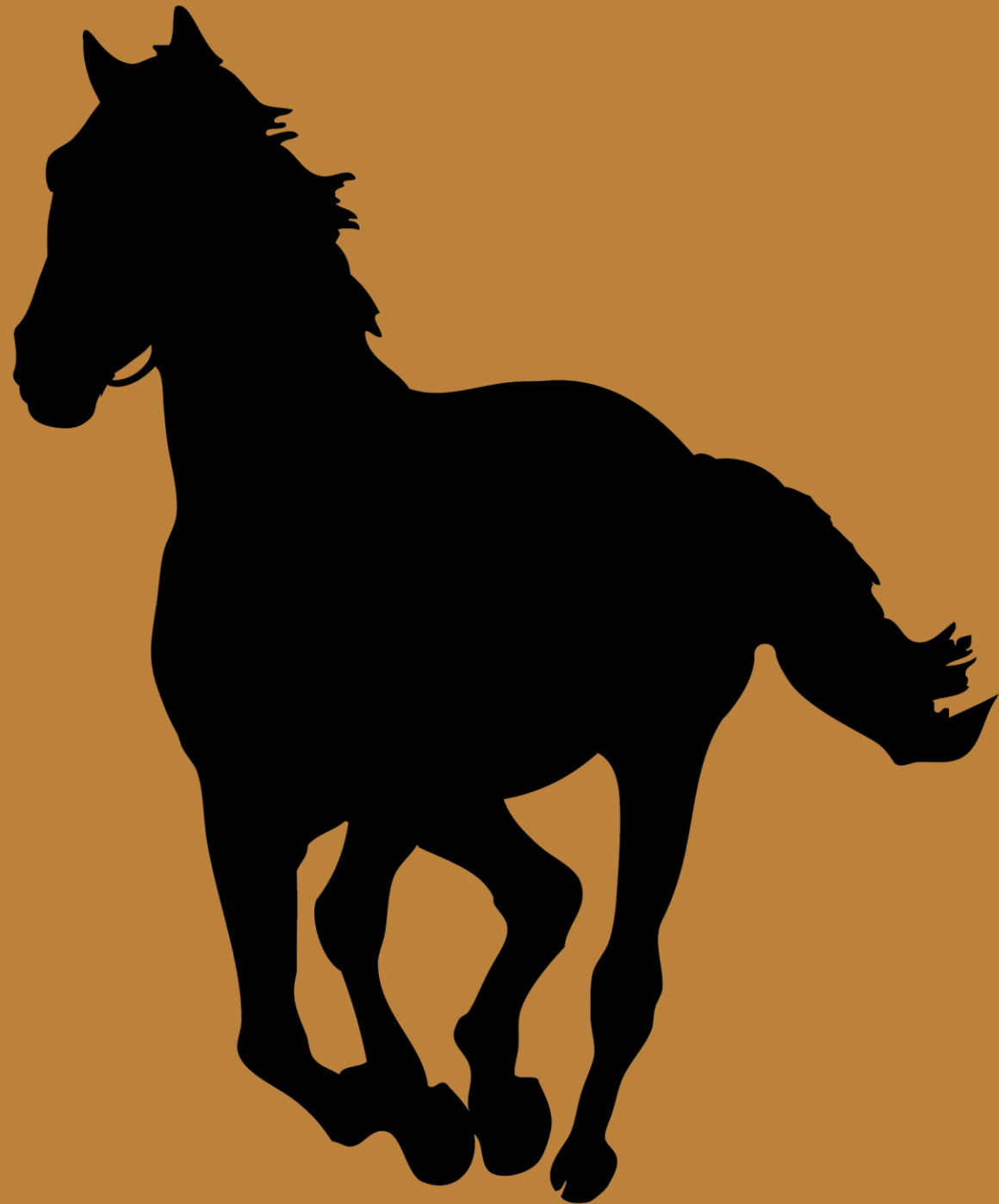


MILTON

Local Road Safety Plan Update




April 18, 2022



AGENDA

-  **Objective**
-  **Vision and mission**
-  **Plan progress**
-  **Community engagement**
-  **Plan process**
-  **Task 3**
 - Present Strategies & Engineering Countermeasures**
-  **Next steps**
-  **Summary**

OBJECTIVE

-  Check-in point and update (80% complete)
-  Preview prior to sharing with public
-  Feedback on strategies/recommendations

LOCAL ROAD SAFETY PLAN



Implement a transportation infrastructure that meets current needs, accounts for future growth, and allows residents to traverse Milton in a calm, safe, efficient manner

Vision: The City of Milton will have a transportation system that is safe, offers a diversity of travel, and that allows our citizens to traverse safely and calmly throughout our city.

Mission: The City proactively strives through our Local Road Safety Plan to chart a strategy to make improvements to Milton's transportation network through engineering, education, and enforcement that respect Milton's rural heritage, enhance its quality of life, and make our roadways as safe as possible.

PLAN PROGRESS



Began fall 2020



Partnered with KCI
fall 2021



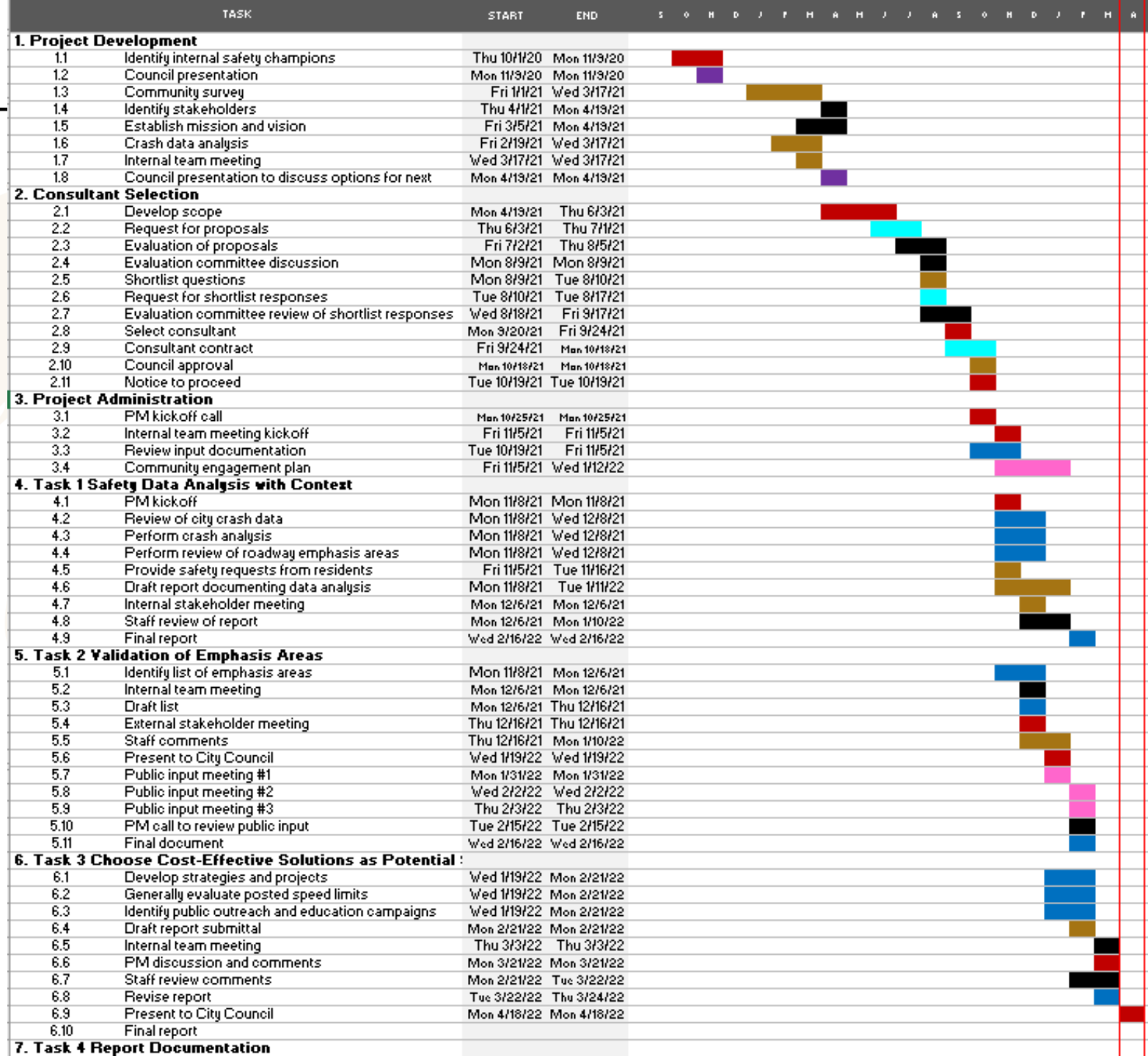
Council update
January 19



3 public input
meetings







Draft Task 3:
Identification of
Strategies report



COMMUNITY ENGAGEMENT

Goal to provide the community opportunities to learn and share in the plan

-  **3 Public meetings (1/31, 2/2 & 2/3)**
 - 2 In-person and 1 virtual
 - 10 attendees
 - Presented findings of task 1 & 2
-  **Social media posts throughout the process**
-  **Plan webpage www.cityofmiltonga.us/RoadSafety**
-  **Updates provided to City Council (3 previous updates)**

PLAN PROCESS

CONSULTANT SERVICES

Task 1

Safety data analysis with context

Task 2

Validation of emphasis areas

Task 3

Identify Cost-effective solutions as strategies

Task 4

Report documentation

Step One – Identify Leadership/Stakeholders

Step Two – Collect/Analyze Safety Data

Step Three – Choose Cost-Effective Solutions

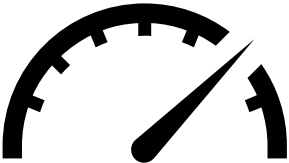

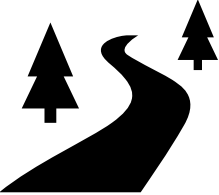

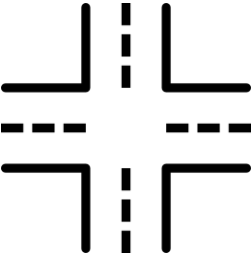
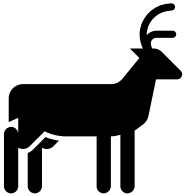
Step Four – Implement Solutions

Step Five – Completion and Ongoing Analysis

WE ARE HERE

TASKS 1 & 2

 Identified six emphasis areas for the LRSP:

 Vehicle Speeds	 Distracted Drivers	 Roadway and Shoulder Conditions
 Pedestrians & Bicyclists & Equestrians	 Intersection Safety	 Wildlife/Deer

TASK 3

Task 3: Choose Cost-Effective Solutions as Potential Strategies

Potential strategies and safety countermeasure projects for:

- Educational Campaigns
- Engineering Countermeasure
- Enforcement Strategies

23-page draft report

TASK 3



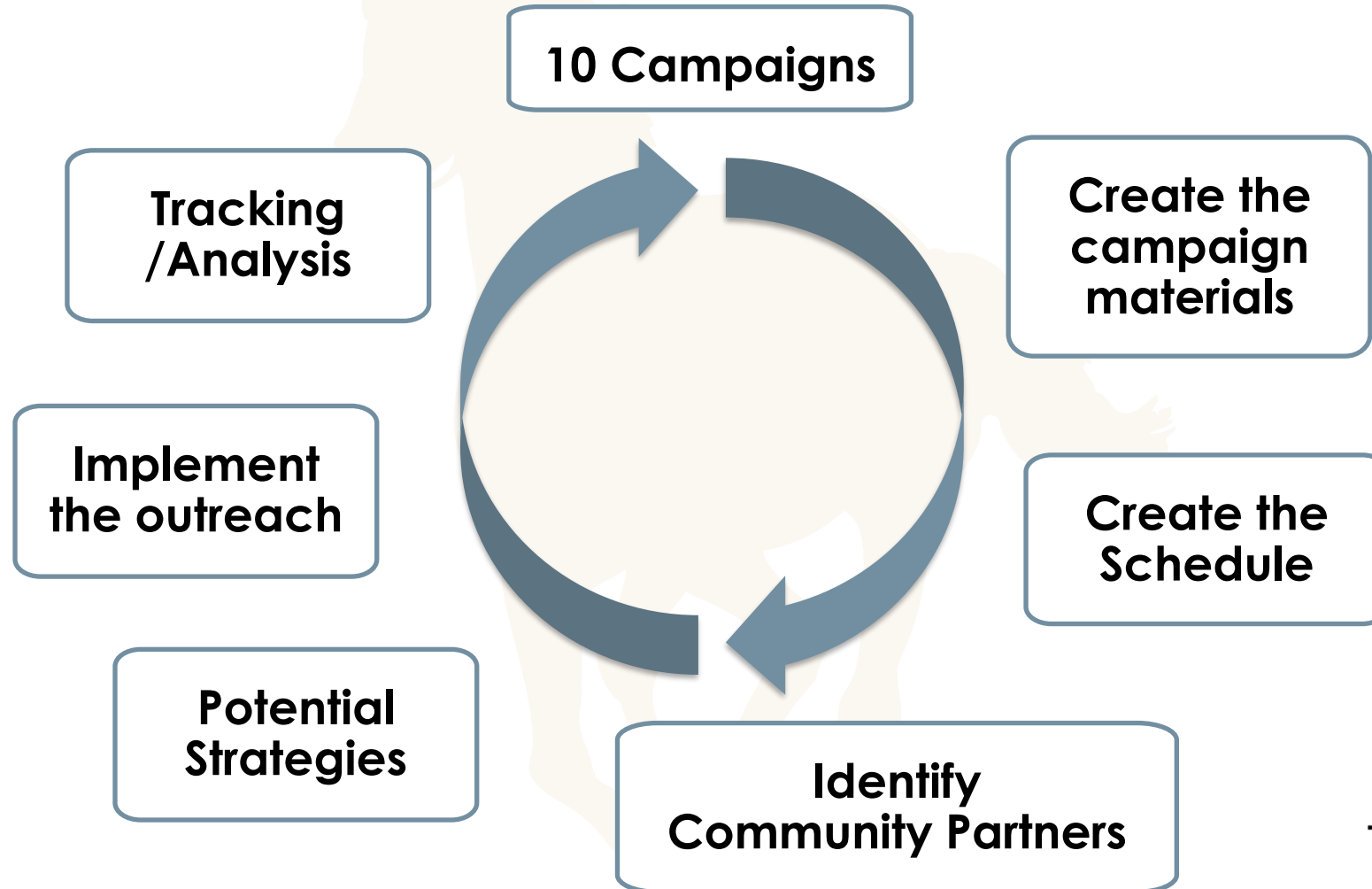
Number of Strategies and Projects

Emphasis Areas	Educational Campaigns	Engineering Countermeasures	Enforcement Strategies
Vehicle Speeds	1	5	Yes
Distracted Drivers	1	--	Yes
Roadway and Shoulder Conditions	1	13	--
Pedestrians & Bicyclists & Equestrians	4	8	Yes
Intersection Safety	1	11	Yes
Wildlife/Deer	1	2	--

EDUCATIONAL CAMPAIGNS



LRSP identified these components:



EDUCATIONAL CAMPAIGNS

Ten potential strategies were identified for educational campaigns and public outreach methods:



Vehicle Speeds

- Raise awareness of potential speed related crashes (Aggressive Driving)



Distracted Drivers

- Raise awareness of potential distracted driving related crashes



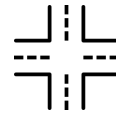
Roadway and Shoulder Conditions

- Raise awareness of potential run off the road crashes



Pedestrians & Bicyclists & Equestrians

- Bicycle rules of the road; appropriate travel etiquette through roundabouts, traffic signals, and stop control intersections
- Bicycle rules of the road relevant to vehicle drivers
- Pedestrian rules of the road
- Etiquette for all modes when approaching equestrians on streets or shared use paths



Intersection Safety

- Roundabout rules of the road and safety success in the City of Milton



Wildlife/Deer

- Scheduled reminders to residents/drivers

Focus Area: PTV Safety

- PTV rules of the road

CAMPAIGN MATERIALS



Vehicle Speeds (Examples)

Georgia Department of Transportation
October 26, 2019

Speeding is especially deadly for teen drivers: In 2017, 27% of teen drivers involved in fatal crashes were speeding at the time of the crash. Parents, remind your teen to slow down and obey the posted speed limits.

4 likes, 1 Comment, 2 Shares

Like Comment Share

SPEEDING IS ONE OF THE MOST COMMON AGGRESSIVE BEHAVIORS

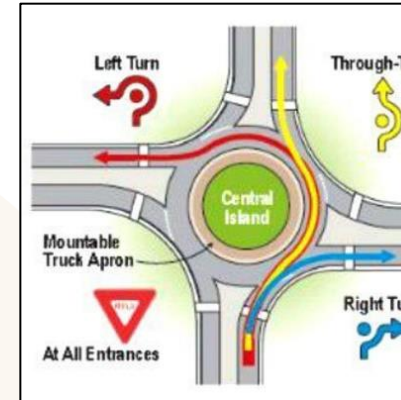
TARGET **ZERO** FDOT
SOURCES & SOCIAL MESSAGES

STOP AGGRESSIVE DRIVING DRIVE SAFE

fdotmiamidade.com/drivesafe-md



Pedestrians, Bicyclists, Equestrians (Examples)



SCTPA

- Equestrian riders ✓
- Pedestrians ✓
- Bicycles ✓
- Motorized bikes ✗
(gas/electric)

STOP AGGRESSIVE DRIVING DRIVE SAFE

fdotmiamidade.com/drivesafe-md

FDOT

CAMPAIGN MATERIALS



Distracted Drivers (Examples)

96% of people think texting while driving is dangerous – yet 44% do it.

www.fdot.com/miamidade.com/putitdown

PUT IT DOWN
IT'S THE LAW

DON'T RIDE DISTRACTED

STAY FOCUSED

DISTRACTED DRIVING STATISTICS

More details about the statistics and where they're from

3,477	People were killed in distracted driving accidents in the US in the year 2015
391,000	Total accidents occurred involving distracted driving
660,000	Estimated number of drivers using phones while driving during daytime hours
75,000	Summonses issued by the NYPD to drivers specifically for texting and driving in NYC



Wildlife/Deer (Examples)

How to avoid a Deer Collision

There are about **1.5 million** car accidents with deer each year

These accidents result in **\$1 billion** in vehicle damage

Causing between **175-200** human fatalities

and over **10,000** personal injuries

Steps to Avoid a Deer Collision This Fall

- Stay awake, aware and sober
- ALWAYS wear a seat belt. It's the best defense against injury in any roadway crash

An estimated **1.33 million** auto-deer collisions occurred in the U.S. from July 1, 2017 to June 30, 2018.

SOURCE: 2020 Farm analysis of claims involving vehicles and deer, 60% involve or can involve all 50 states and the District of Columbia

USA TODAY

DEER TIP #6

Don't swerve to avoid hitting a deer.

POTENTIAL COMMUNITY PARTNERS

- 
-  **Fulton County Schools (Milton High School, Cambridge High School, Northwestern Middle School, Hopewell Middle School)**
 -  **City of Milton Police Department**
 -  **City of Milton Fire Department**
 -  **Citizens Government Academy**
 -  **Georgia Bikes**
 -  **The Southern Bicycling Club**
 -  **Olde Blind Dog Cycling Club**
 -  **Milton Equestrian Committee**
 -  **Milton Trails Advisory Committee**
 -  **Alive at 25 Driver Safety Program**
 -  **Facebook groups (Focus on Milton, Half Sweet Tea, etc.)**
 -  **HOAs**
 -  **Milton Farmers Market**
 -  **Whitetail Bicycles & Coffee Shop**
 -  **Newspapers/Publications/Media (Milton Herald, Our Milton Neighbor, North Georgia Living, Patch)**
 -  **Police Chief's Advisory Board**

POTENTIAL STRATEGIES

- 🐎 Ambassador/Champions, such as council members or community leaders, connecting people to campaigns
- 🐎 Testimonials from residents
- 🐎 Community safety implementation group/Local advisory groups
- 🐎 Advertising (WAZE, newspapers, radio, etc.)
- 🐎 High School student video contest
- 🐎 Mock-crash sites
- 🐎 School outreach for all ages (walk to school days, theater groups, etc.)

- 🐎 Social media messages
- 🐎 Email blasts (city and police email group, HOA, civic groups, school PTO)
- 🐎 Local media coverage
- 🐎 Tip cards/handouts
- 🐎 City webpage
- 🐎 Community outreach events
- 🐎 Educational/enforcement details
- 🐎 Pop-up events at local businesses



Educational/Enforcement detail with mock-crash site

POTENTIAL STRATEGIES



Option to use a full color graphic Variable Message Sign (VMS): text, symbols and graphics



Used at specific times of the year and strategic locations



Share info and reminders regarding educational campaigns and active deer seasons



ENGINEERING COUNTERMEASURES



38 Potential safety countermeasure projects

- Appropriate for streets classified as collectors and arterials
- Physical improvements
 - Signage
 - Roadway modifications
 - New infrastructure
- Some involve studies
- Some involve policy changes



Highlight 9 countermeasures

ENGINEERING COUNTERMEASURES

Emphasis area: Vehicle Speeds



Engineering review of posted speed limits

- Possible reductions
- A top concern is 45 MPH posted streets
- Formal Traffic Report to support request to Georgia DOT
- Consider non-standard conditions



ENGINEERING COUNTERMEASURES

Emphasis area: Vehicle Speeds



Establish Milton specific speed limit zones

- Horse zone, farm zone, residential zone
- Speed limit zones appropriate for and adjusted to the local conditions, while preserving the reasonable expectations of all drivers using those roads
- For conditions not readily apparent to drivers
- May be part of review of posted speed limits
- Could use advisory speed limit plates (yellow sign)



ENGINEERING COUNTERMEASURES

Emphasis area: Vehicle Speeds



Install raised median islands

- At locations experiencing high speeds or locations where slower speeds are desired
- At pedestrian/shared use path crossings and in advance of horizontal curves
- Similar design to those at roundabout approaches; can be aesthetically pleasing



ENGINEERING COUNTERMEASURES

Emphasis area: Roadway and Shoulder Conditions

Install pavement 'safety edge' & add paved shoulder

- Install at time of street repaving
- 'Safety Edge' removes the drop at the edge of the pavement
- Add 1 to 2 feet paved shoulder
- Option to install at limited distances on horizontal curves or locations with evidence of vehicle tires off the pavement



ENGINEERING COUNTERMEASURES

Emphasis area: Roadway and Shoulder Conditions

Upgrade guardrail and extend guardrail lengths at bridges/culverts

- To meet current design standards
- Identify and prioritize locations
- City can identify a standard for aesthetically pleasing guardrail



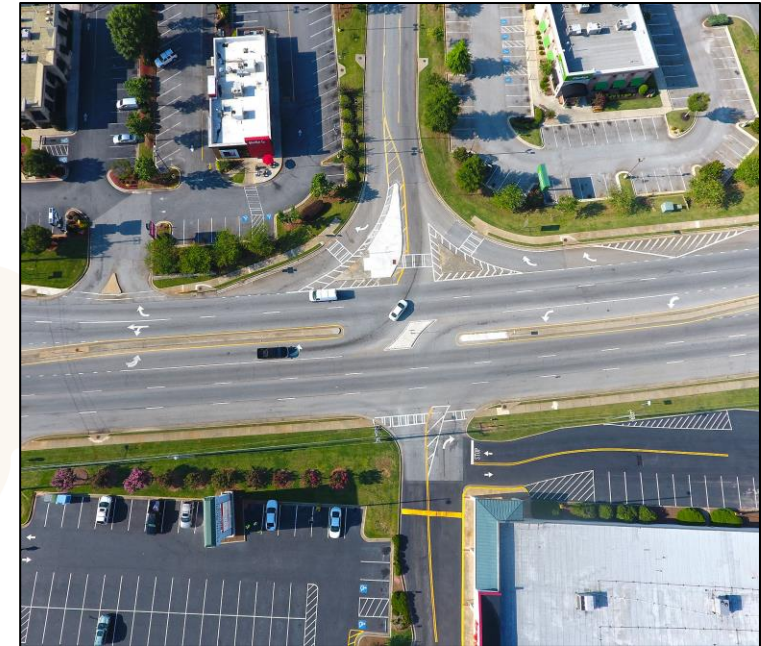
ENGINEERING COUNTERMEASURES

Emphasis area: Intersection Safety



Install left-turn restricted intersections

- To address correctable historical crashes
- At proposed intersections
- Reduced conflict u-turn (RCUT) or right-in/right-out driveways



RCUT image

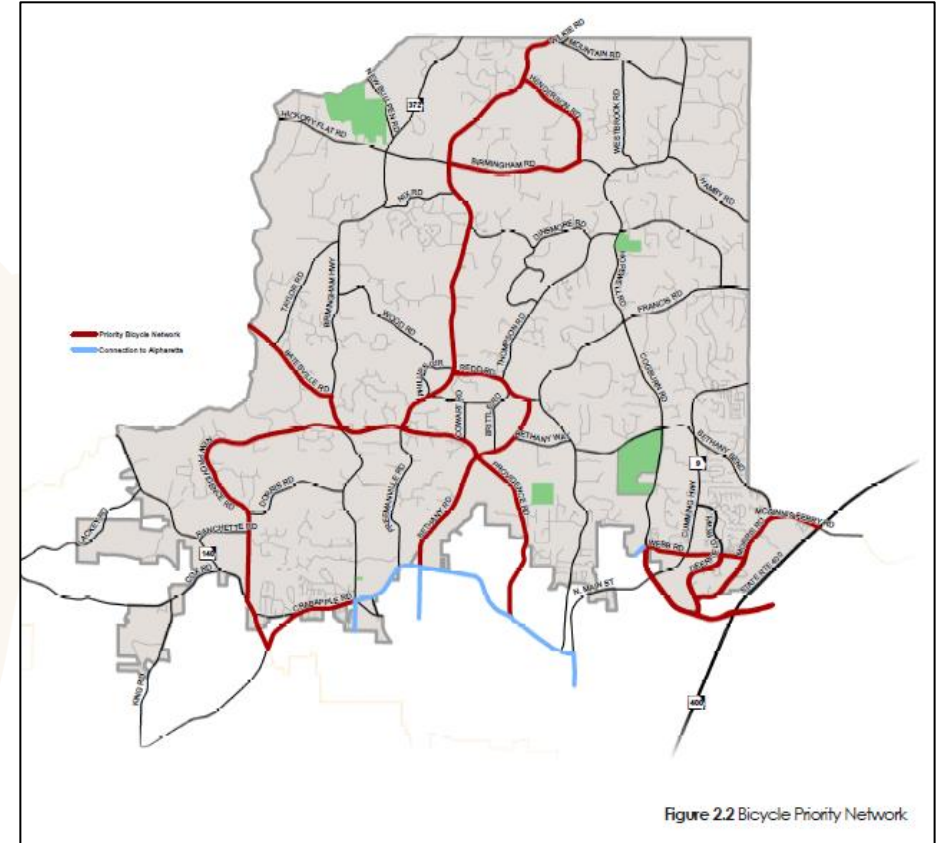
ENGINEERING COUNTERMEASURES

Emphasis area: Pedestrians & Bicyclists & Equestrians



Revisit the Bicycle Priority Networks identified in the previous Comprehensive Transportation Plan:

- Review any policy changes, physical changes, and verify any modifications
- Will aid implementation of safety improvements



ENGINEERING COUNTERMEASURES

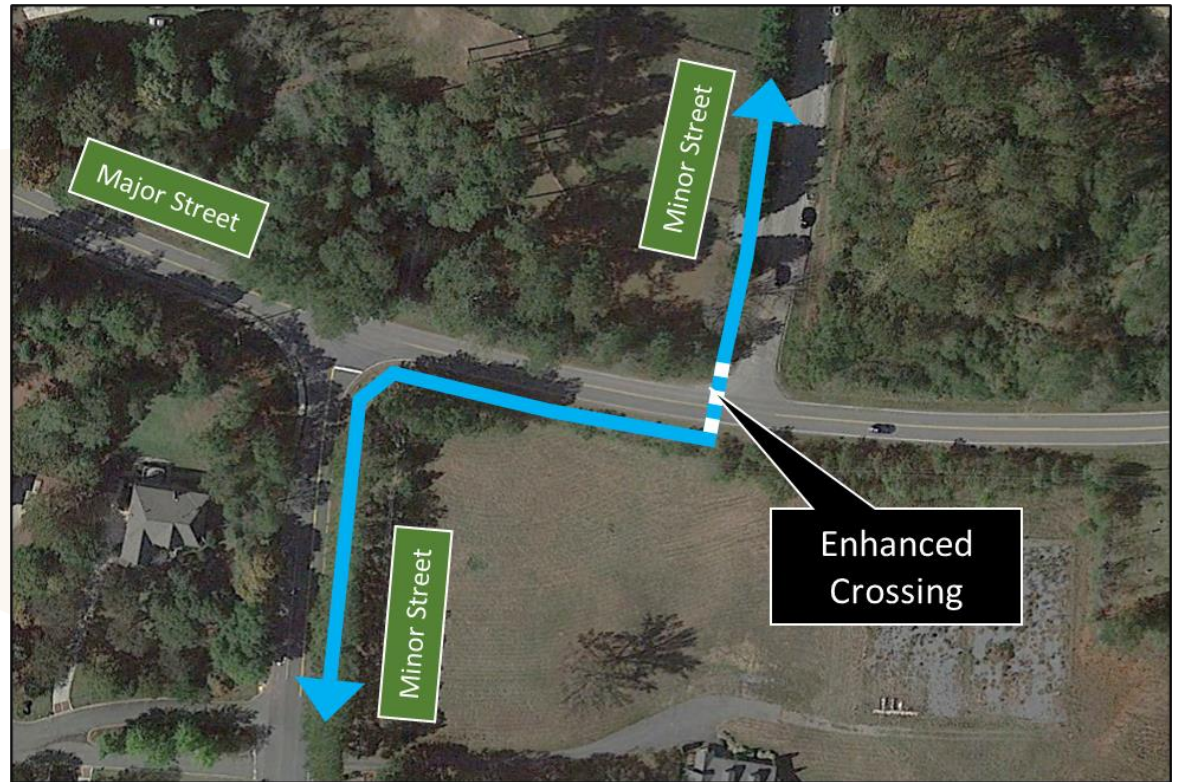
Emphasis area: Pedestrians & Bicyclists & Equestrians



Install bicycle facilities at critical locations

- To provide safe crossing of a high-speed street and/or high-volume street
- Or along a short stretch of a major street

Bicycle facility: Either a shared-use path, bike lane, separated bike lane, or two-way cycle track



ENGINEERING COUNTERMEASURES



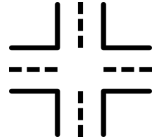

Emphasis area: Pedestrians & Bicyclists & Equestrians

Install median refuge islands at street crossings

- To provide safe crossing of a high-speed street and/or high-volume street
- Could be for pedestrians, bicyclists, and/or equestrians
- Could include activated warning devices (RRFBs or Pedestrian Hybrid Beacon)



ENFORCEMENT STRATEGIES

Emphasis Area	Strategy / Enforcement detail
 <p>Vehicle Speeds</p>	#1 – Address speeding vehicles
	#2 – Automated radar enforcement of speed limits in school zones* (under evaluation)
 <p>Distracted Drivers</p>	#3 – Intelligence led traffic enforcement & education
 <p>Pedestrians & Bicyclists & Equestrians</p>	#4 – Planned stops to remind & advise users
 <p>Intersection Safety</p>	#5 – Planned stops to remind & advise users

FOCUS AREAS

Multimodal Gravel Roads

1. Simple signage
2. Install and open new trail facilities
3. Educate walkers on the “Rules of the road”
4. Better define parking areas or no parking areas
5. Potentially designate for residential traffic only

Safety of PTVs

1. City is currently conducting a study of PTV access for the Crabapple area
2. Enhance and modify city policies for PTVs as the need arises



NEXT STEPS

Consultant Task 3 – Identify Cost-effective solutions as strategies




Identification of potential strategies & safety countermeasure projects:

- Educational Campaigns
- Engineering Countermeasure
- Enforcement Strategies

Community engagement – share documents online with opportunities to solicit input

Consultant Task 4 – Report Documentation & Action Plan

SUMMARY

-  Check-in point and update (80% complete)
-  Preview prior to sharing with public
-  Comments on strategies/recommendations
 - Any additions or strategies that should not be included?

This is a working document with input throughout the process

Our goal is to connect with our citizens every step of the way, so they can be involved, engaged, and informed on what's happening with the plan