

Please get out your devices...



1. On your device's browser, go to [menti.com](https://www.menti.com)

2. Enter the code **57 63 84 4**

We will be asking feedback questions throughout the presentation.

Please join the meeting at this link:

<https://zoom.us/j/96737370826>.

The meeting will start shortly!



Comprehensive Plan

Community Education Session #2
Sustainability

02/18/21 at 6:00PM

Tonight's Speakers



Robert Reed
Southface



Austin Robinson
Southface



Catherine Gunter
Southface

Consultant Team Members

City of Milton Staff



Michele McIntosh-Ross
Principal Planner



Teresa Stickels
Conservation Projects
Manager

Agenda

What is Sustainability?

Why is this important to Milton?

Milton's Sustainability Efforts to Date

Live Polling Question - Mentimeter

Sustainability in Milton

Live Polling Question - Mentimeter

What We've Heard

Live Polling Question - Mentimeter

Open Q&A

What is Sustainability?

A scenic view of a green field with a wooden fence in the foreground and a large tree on the left. The text is overlaid on the image.

Meeting the needs of the present without compromising the ability of future generations to meet their needs.

Why is this important
to Milton?



Why are we having this session?

- To educate the community on the importance of environmental sustainability
- To ask questions to the community such as:
 - Do you feel Milton has sufficient environmental sustainability efforts?
 - How could Milton improve our environmental sustainability?
 - How do you feel about the ideas & examples we will show in this presentation?
- This is your opportunity to tell us what sustainability efforts are appropriate for Milton
- All examples & ideas are for inspiration purposes only, Milton is a unique City that can implement our own specific strategies

MILTON
ESTABLISHED 2001
Broadwell Pavilion

Milton's Sustainability
Efforts to Date

- Common household recyclables at curbside
- Hazardous household waste
- Electronics
- Christmas Trees

Recycling



Land Conservation

- **Greenspace Bond**
- **Transfer of Development Rights (TDR) Program**
- **Habitat restoration**
- **Conservation Use Value Assessment (CUVA) workshop**
- **Large lot incentives**
- **Agribusiness ordinances**



Environmental Education

- Earth Day
- Arbor Day
- Septic Tank Workshop
- Mark Law Arboretum
- Environmental education grants



Volunteer Engagement

- Adopt a Road
- Rivers Alive
- Storm Drain Marking



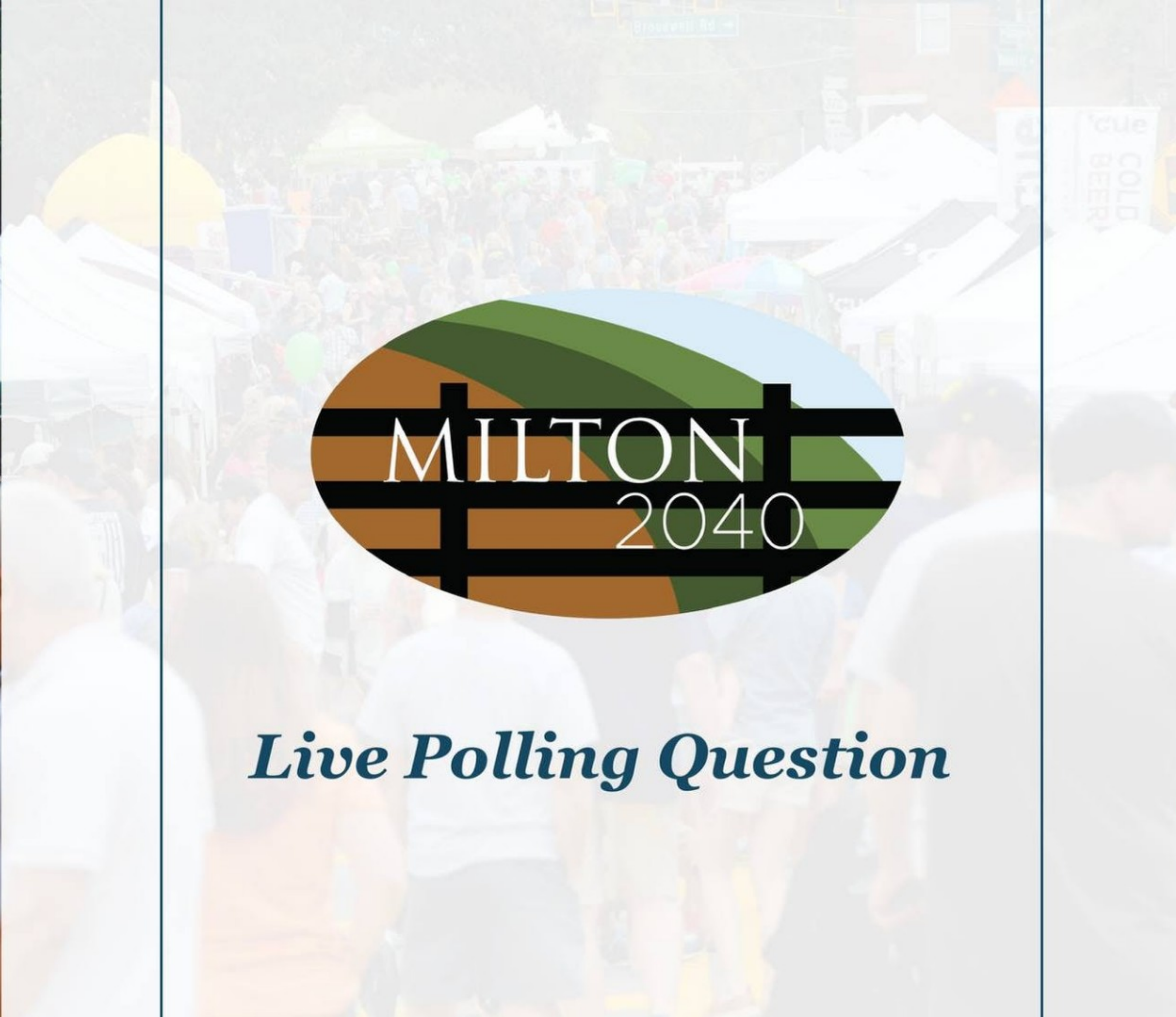
Environmental Recognition

- Atlanta Regional Commission's Green Communities Program
- National Wildlife Federation Community Wildlife Habitat
- Fulton County Citizens Commission on the Environment – 2018 Environmental Award
- Tree City USA

Upcoming Projects

- Glass recycling
- Pollinator gardens
- Green energy





Live Polling Question

Which of Milton's current sustainability efforts do you like most? Give up to 3 answers.



Sustainability in Milton

Sustainability in Milton

***Regional Water
Planning***



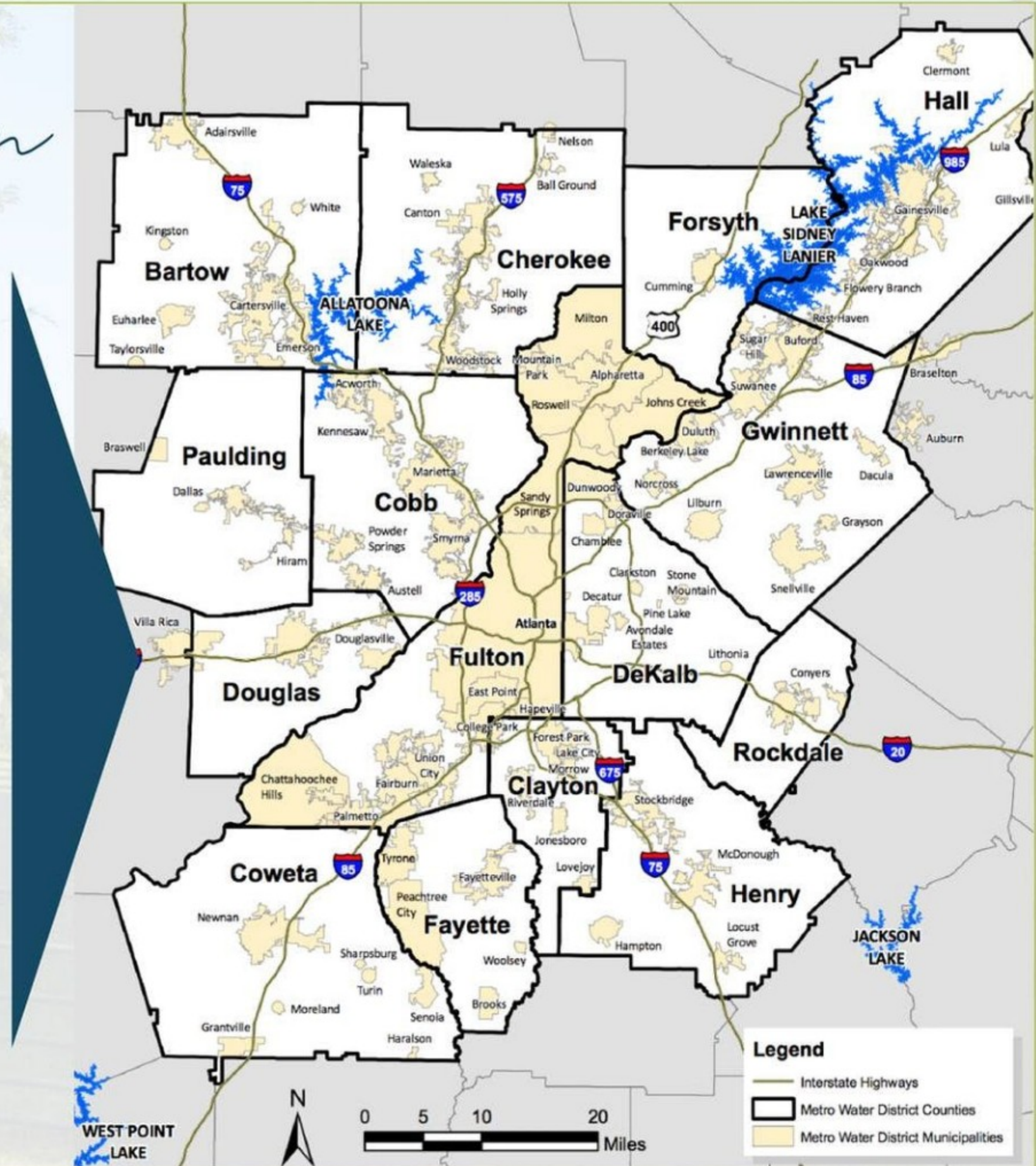
Rural Character


Regional Water Plan

Metropolitan North Georgia Water Planning District (MNGWPD)

Initial Recommendations

- Regional watershed-based planning strategy
- Incorporation of green infrastructure policies, goals and implementation measures into Stormwater Management Plan.
- Work with Fulton County on an adoption of a stormwater utility fee.





“...Maintenance of the unique agricultural elements, lower density development patterns, lifestyle and character of the existing community is central to the wishes of many local citizens.”-2016 CDP

Are protections in place sufficient for a Rural Milton in 2040?

Rural Character and Sustainability

Preserving Rural Character

- Provides agriculture products
- Preserves the natural hydrologic cycle
- Provides more dollars in taxes than it consumes in services
- Sequesters carbon



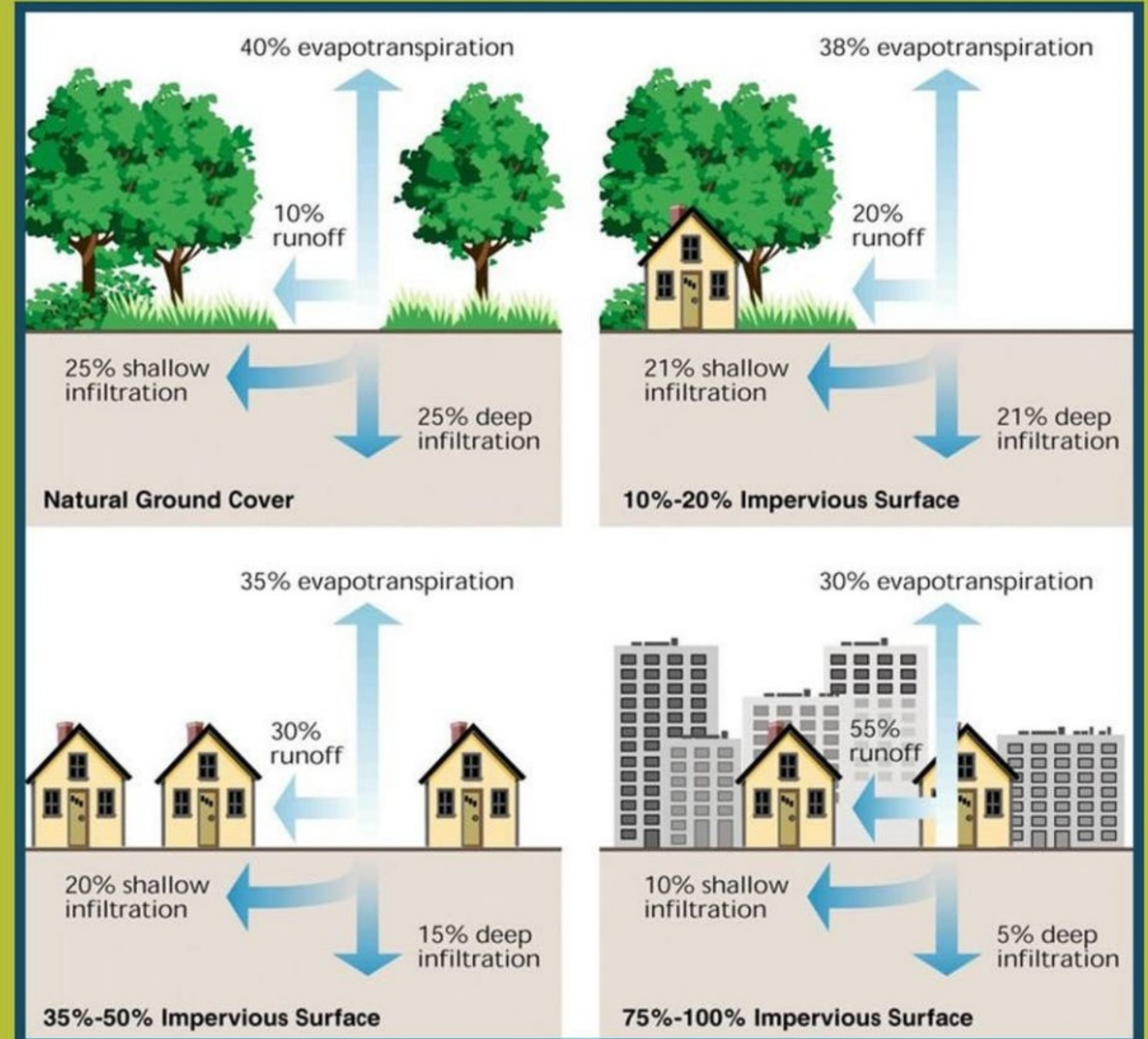
Agriculture Products

Rural Character and Sustainability

Impervious Coverage

- A watershed is forever impacted at **10%** impervious cover
- **10%** cover on an acre lot is only **4,356 square feet**.

High impervious cover areas like Deerfield are easier to mitigate with Green Infrastructure



Rural Character & Sustainability

Agricultural land costs the least to service

**Cost of Community Services Per
Dollar Revenue**



Rural Character and Sustainability

“Pastures strewn or crisscrossed with trees (silvopasture) sequester five to ten times as much carbon as those of the same size that are treeless, storing it in both biomass and soil.”

-Project Drawdown

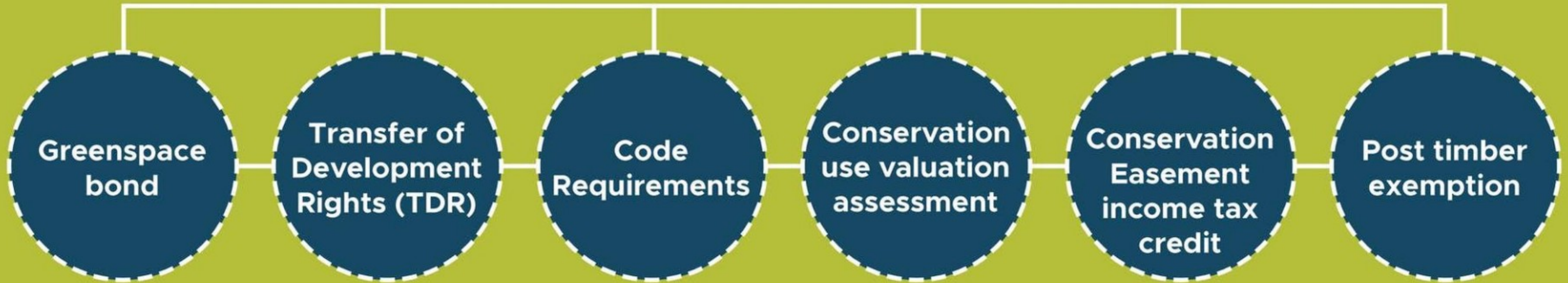
Carbon Sequestration

- Grazing land can contain 54% more carbon than cultivated lands
-NRCS,USDA



Rural Character & Sustainability

Milton's current programs, regulations, and policies



- 400 + acres

- 27 acres

- **AG-1 Zoning** (1 acre minimum; 3 acres on public gravel roads)
- **Lot Coverage Limits** (20% public road; 25% private road)
- **Rural overlay**
-Viewshed Buffer 60'
- **75-foot stream buffer**

- State and federal policy

- Development waiting period





Is it enough to preserve Milton's Rural Character?



Is it enough to preserve Milton's Rural Character?



Is it enough to preserve Milton's Rural Character?



Is it enough to preserve Milton's Rural Character?



The image is a composite of two aerial photographs. The top half shows a dense residential development with a clear grid of streets and numerous small houses. The bottom half shows a large, open green field. A yellow banner with text is overlaid on the boundary between the two images.

Is it enough to preserve Milton's Rural Character?

An aerial photograph of a residential development. The development features a central green field, possibly a park or sports field, surrounded by a grid of streets and numerous houses. The houses are densely packed, and the overall layout suggests a planned community. The text is overlaid on a yellow rectangular background in the center of the image.

Is it enough to preserve Milton's Rural Character?

An aerial photograph of a residential neighborhood. The houses are arranged in a grid-like pattern with a central green field. The houses are mostly single-story with light-colored roofs. The green field is in the center of the neighborhood, surrounded by trees and grass. The overall scene is a typical suburban residential area.

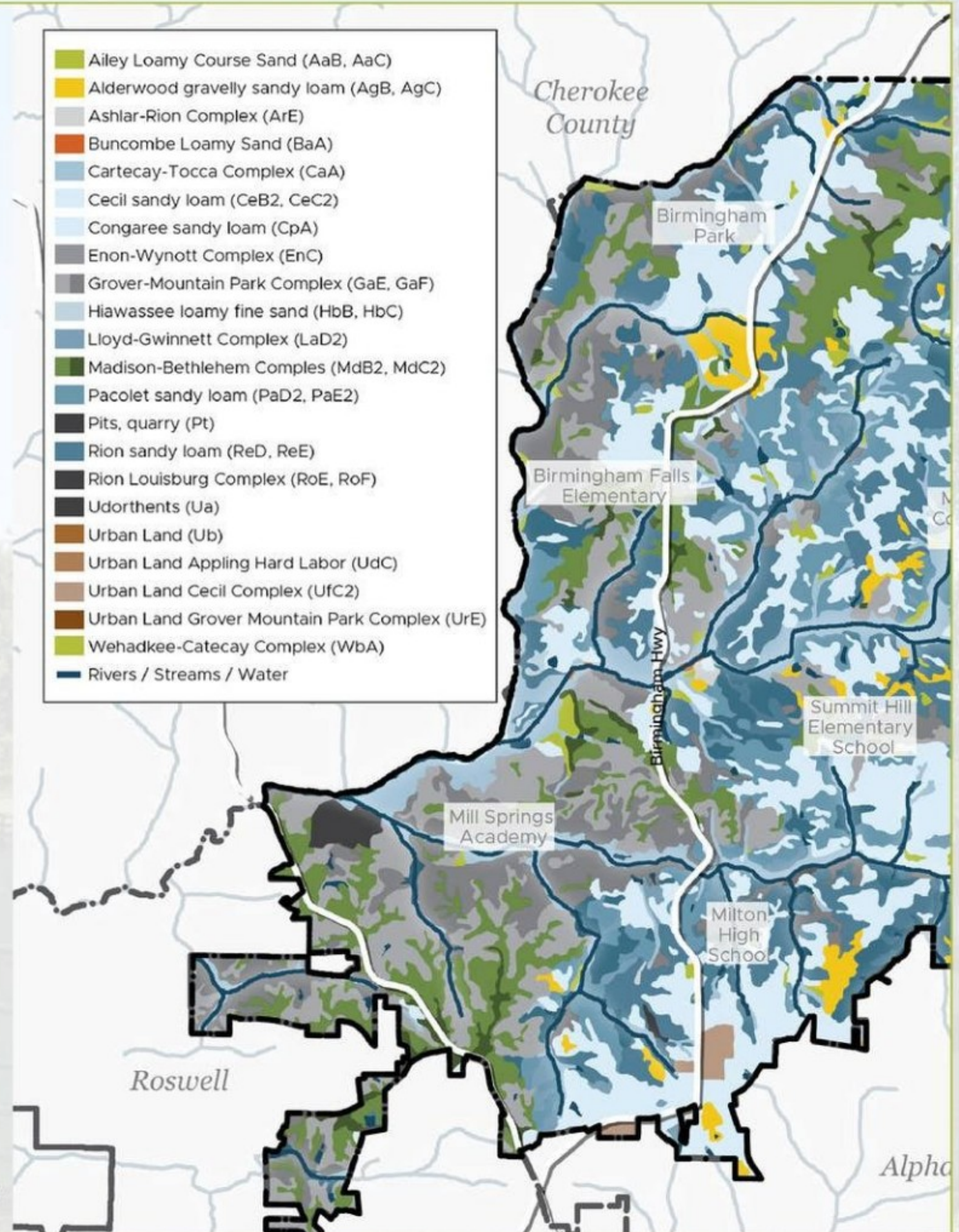
Is it enough to preserve Milton's Rural Character?

Soils & AG-1 Zoning

Soils unsuitable for septic:

- “Hard labor”
- “Helena”
- “Star”
- Those closely associated with State Waters

**Does not preclude development-
Minimum 1 acre contiguous suitable
soils must be included in a lot**



Rural Character & Sustainability

AG-1 Zoning

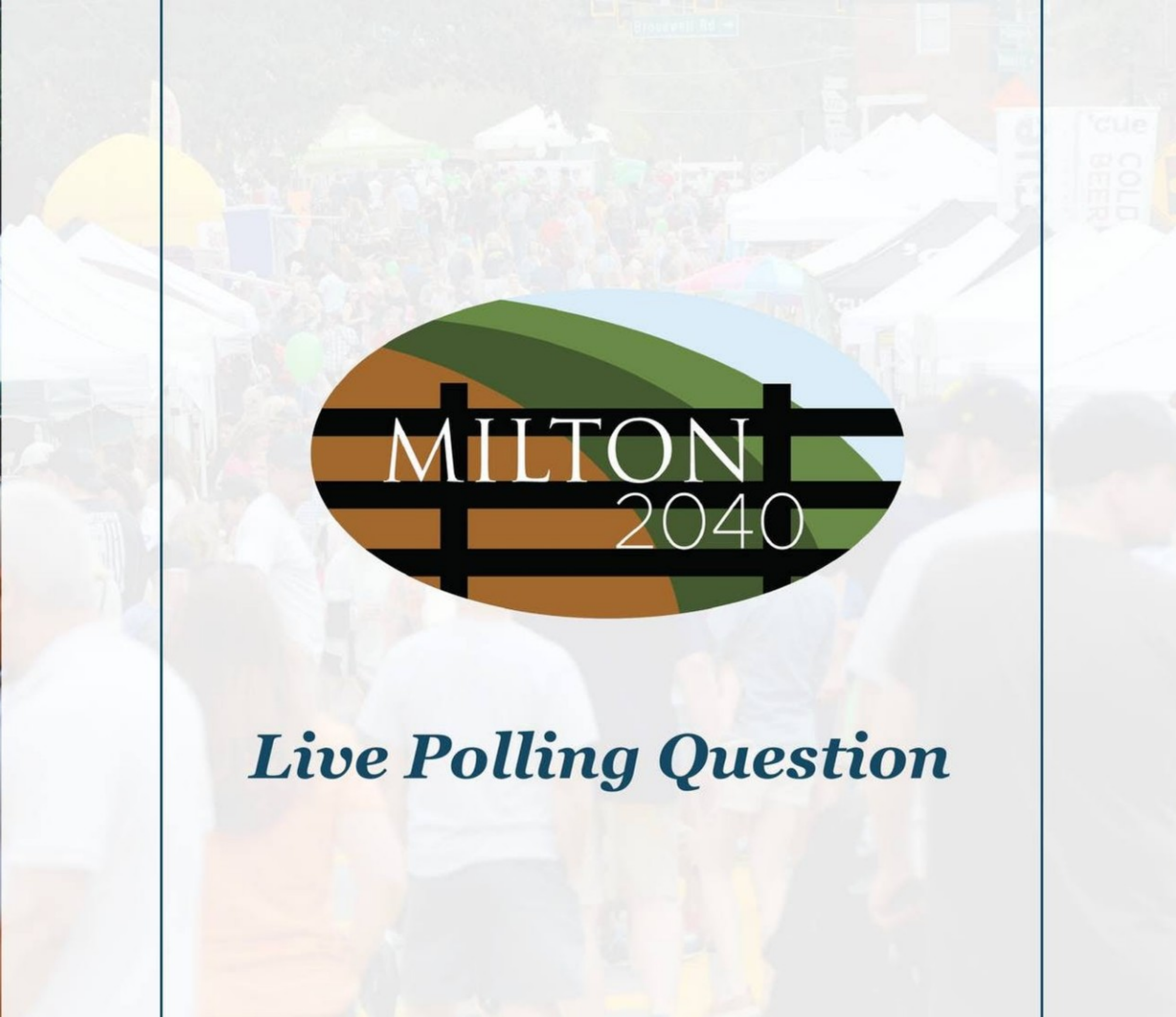
- Increased Minimum Frontage Requirements
- Fire access

Single Family Detached Housing Demand

- Two actively selling communities (1 acre + developments)
 - Total lots (2016 –Current)= **107**
- Anticipated demand 2020-2040 = **600-800 units**
- Value of land converted **\$175,000/acre**



With such high pressure on Rural Character, are additional protections needed?



Live Polling Question

What new, or perhaps expanded, sustainability initiative – whether it's a program, a project, or a priority – should the City tackle next?



What We've Heard

Sustainability in Milton

What Milton Residents Like

(Online Results)

- Expanded recycling programs (through partnerships with other municipalities OR City initiative)
- Tree planting programs
- Composting
- Greenspace bonds to preserve land for passive uses
- Large lot (low-density) AG-1 residential development - 1 acre minimum
- Incentives for large lot owners (3+ acres)



400 ac PURCHASED WITH LAST GREENSPACE BOND

1. Add walking trails (80%)
2. Leave as conservation land (46%)

& 71%
are open to another
GREENSPACE BOND

60%
agree that the City
**SHOULD PRIORITIZE
ENVIRONMENTAL
SUSTAINABILITY**

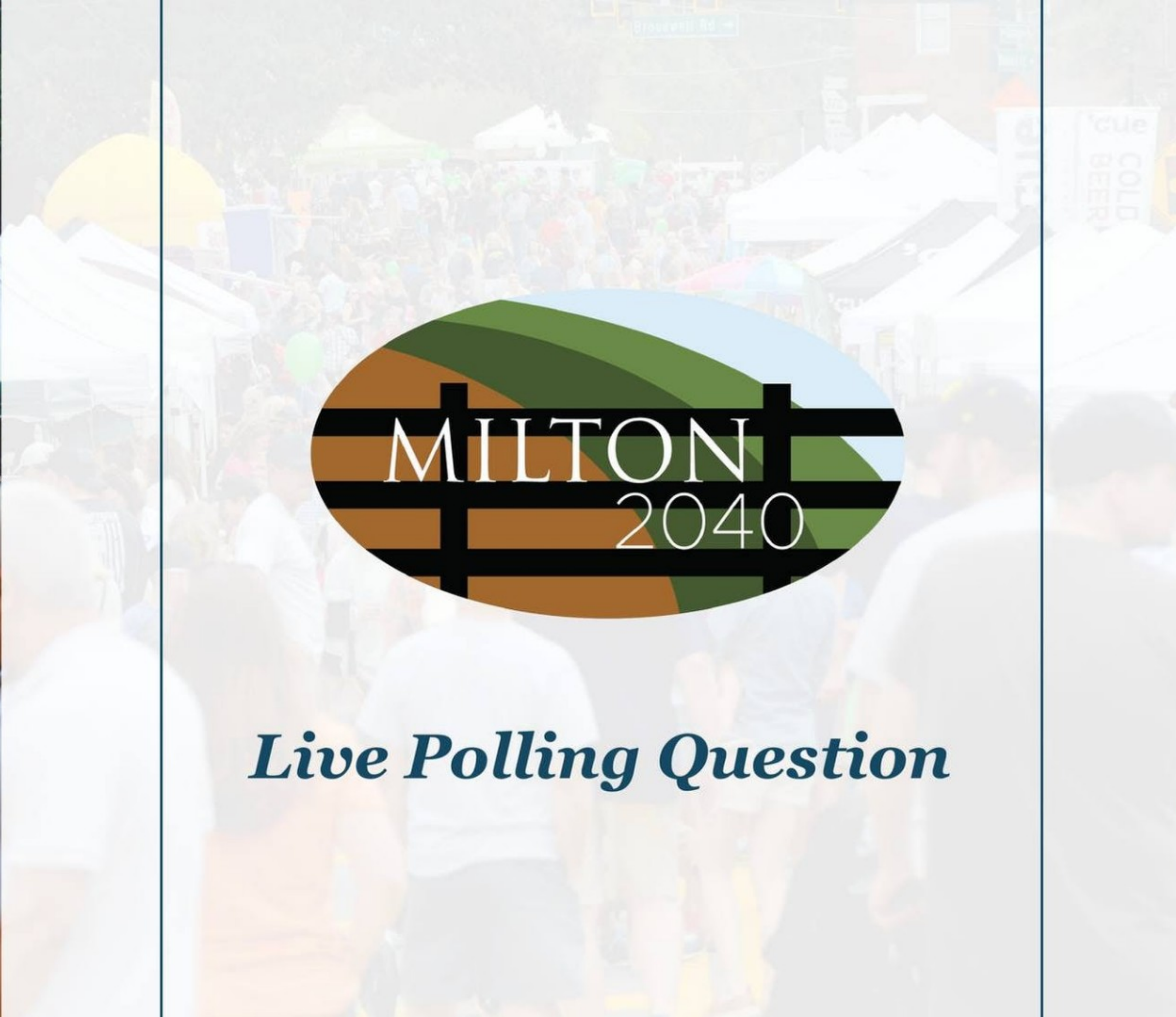
1. Expanded recycling
2. Tree planting program
3. Composting

TOP 3

LID STRATEGIES*

- 1 Permeable pavers for streets and parking
- 2 Stormwater planters
- 3 High-porosity concrete sidewalks and parking
- 3 Vegetated and hardscape filtration

*low-impact development strategies



Live Polling Question

What should the City do to preserve its rural character? Share up to 3 examples.



Q&A with Audience

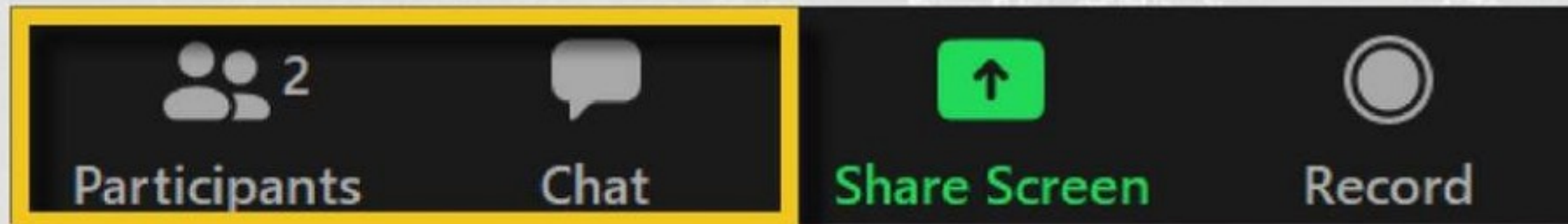
Guidelines for Participation

- 1. Speak from your own perspective using “I” statements.***
- 2. Respect others’ viewpoints while listening respectfully and intently.***
- 3. Stay focused on the discussion at hand.***
- 4. Ask questions.***
- 5. Be patient with one another as we talk.***
- 6. Use the “raise hand” feature as well as the chat box on Zoom.***
- 7. Use the comment box on Facebook.***

Guidelines for Participation

- **For ZOOM App users by Computer, Tablet and Smartphone:**

- ***Click Participants in your Meeting controls at the bottom of your screen, and click 'Raise Hand'***

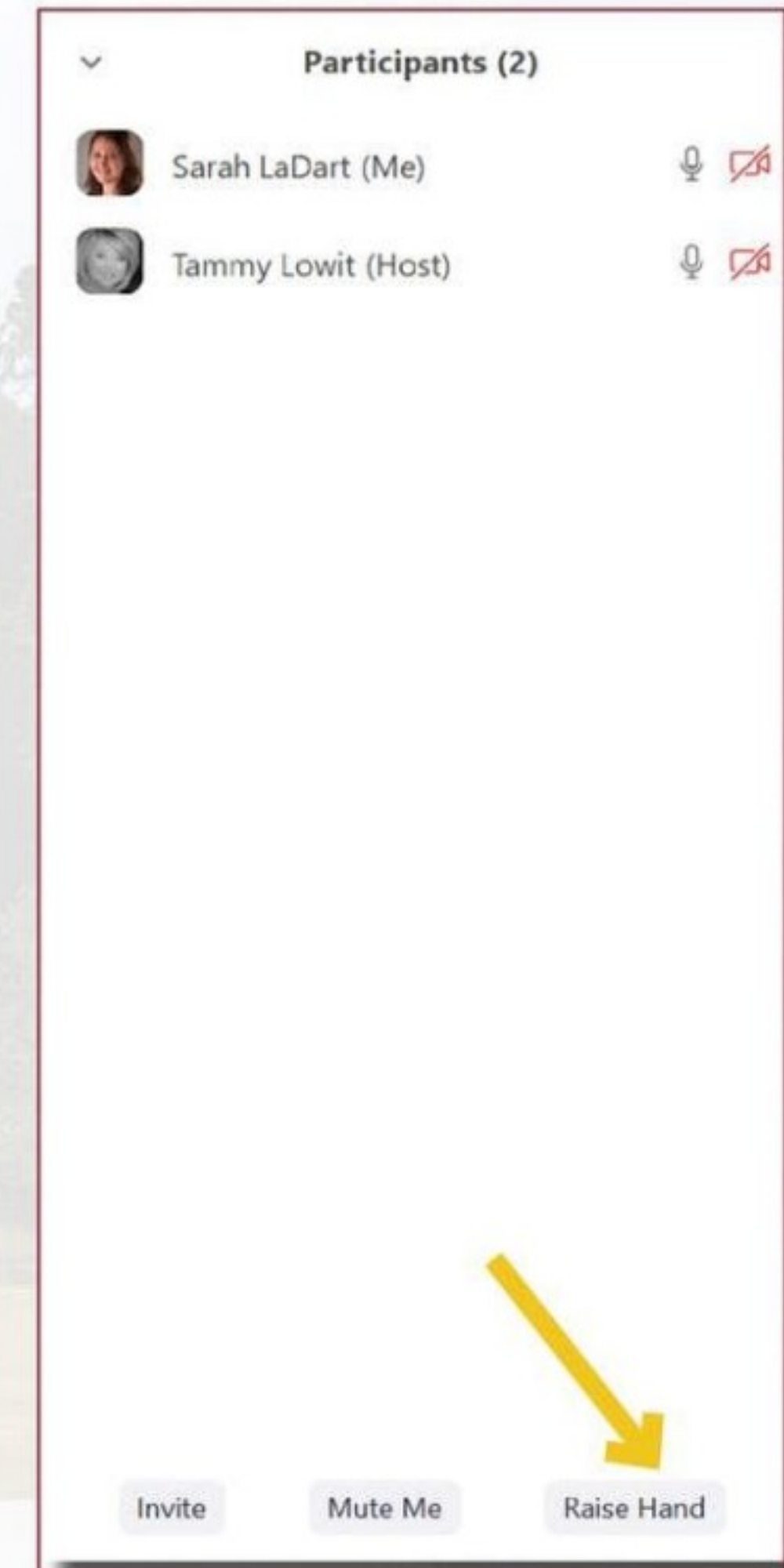


- **For Callers using telephones:**

- ***To Raise Hand - Press *9***
- ***To Unmute - Press *6***

- **For Facebook users by Computer, Tablet and Smartphone:**

- ***Type thoughts and questions in comment box. Questions will be answered within a day.***



Engagement Opportunities

Community Education Session 3

Topic: Transportation in Milton

When: March 11, 2021 @ 6 PM

Where: Zoom & Facebook Live

Engage Online at anytime!

Visit the Ideas Walls here: **www.cityofmiltonga.us/engagement**

Visit our webpage here & fill out a comment card:

<http://www.cityofmiltonga.us/ComprehensivePlan>

Thank you!

