



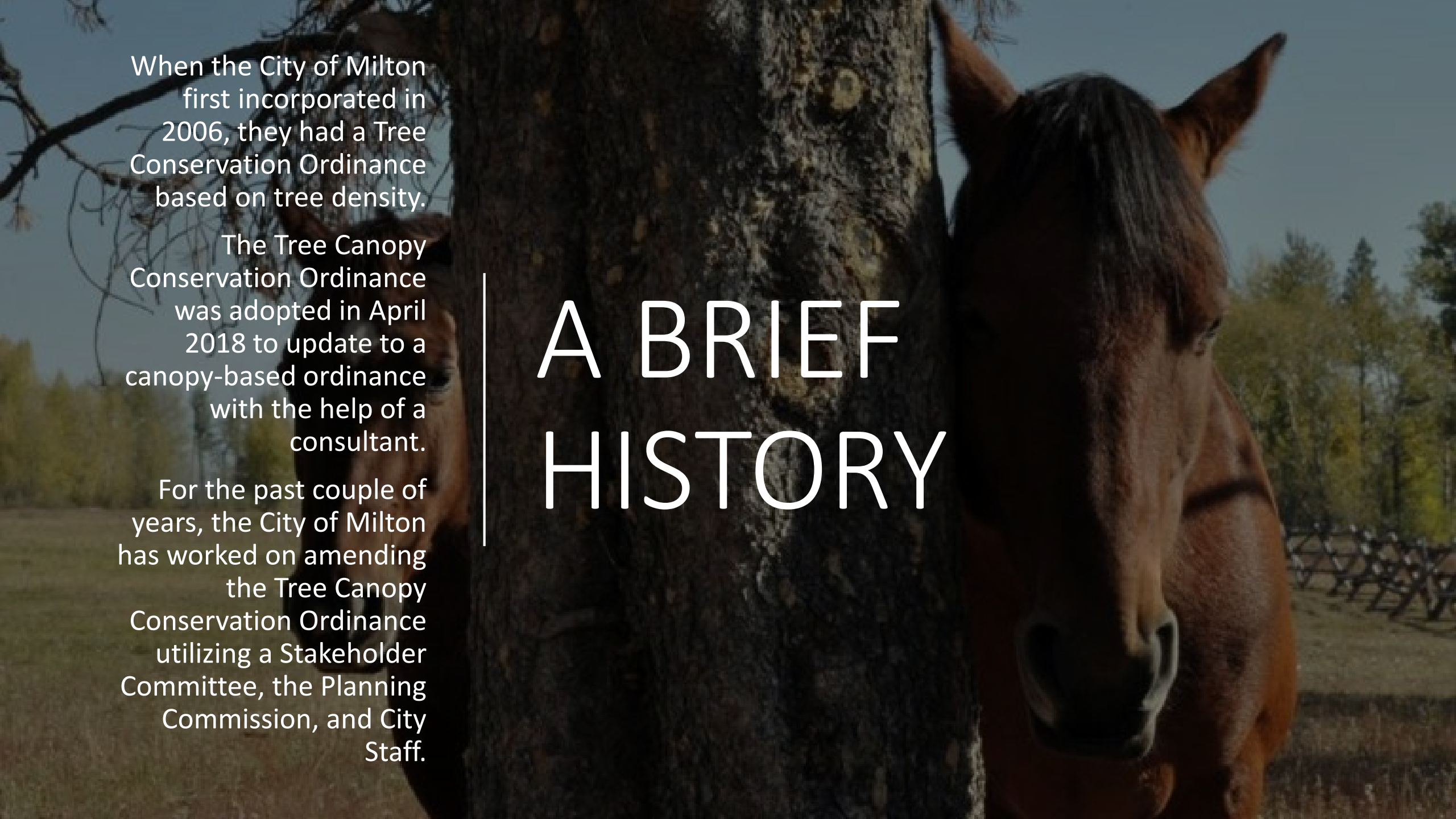
Tree Canopy Conservation Ordinance

Homeowners Guide



AGENDA

1. WELCOME
2. BRIEF HISTORY OF THE MILTON TREE ORDINANCE
3. WHEN IS A TREE REMOVAL PERMIT REQUIRED
4. HOW TO APPLY FOR A TREE REMOVAL PERMIT
5. WHAT ARE THE REQUIREMENTS FOR A TREE REMOVAL PERMIT
6. QUESTIONS
7. ADJOURN

A brown horse is standing next to a large, textured tree trunk. The horse's head is visible on the right side of the frame, looking towards the left. The background shows a grassy field and some trees under a clear sky.

When the City of Milton first incorporated in 2006, they had a Tree Conservation Ordinance based on tree density.

The Tree Canopy Conservation Ordinance was adopted in April 2018 to update to a canopy-based ordinance with the help of a consultant.

For the past couple of years, the City of Milton has worked on amending the Tree Canopy Conservation Ordinance utilizing a Stakeholder Committee, the Planning Commission, and City Staff.

A BRIEF HISTORY

What's New

- Language clean-up to streamline ordinance for clarity
- Protected tree size changed from 6" DBH to 15" DBH
- Tree canopy coverage minimums



When is a tree removal permit required?



Any tree 15" DBH or larger



Any small canopy tree, such as, dogwood or redbud 8" DBH or larger

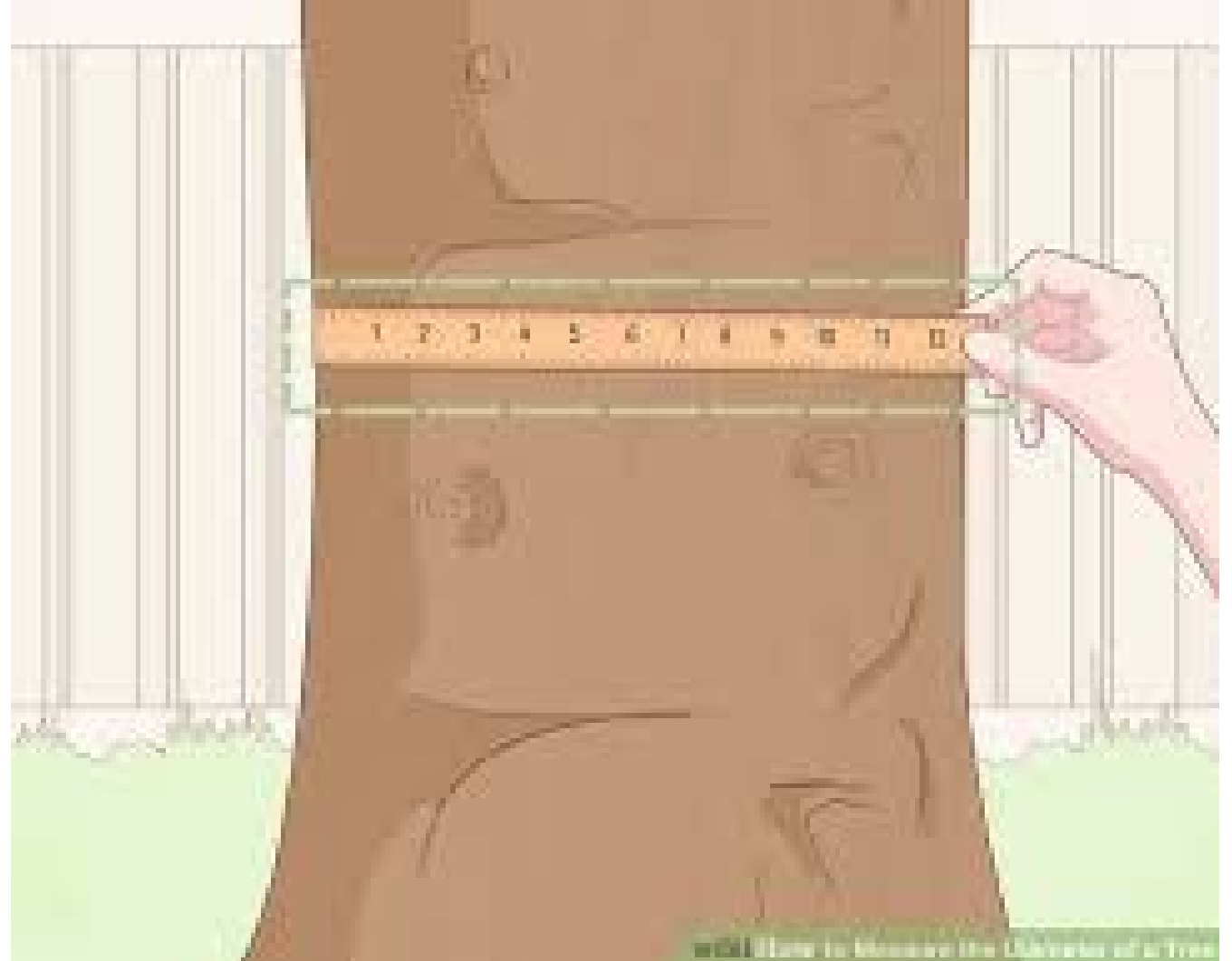


Any tree located within a stream buffer or zoning buffer

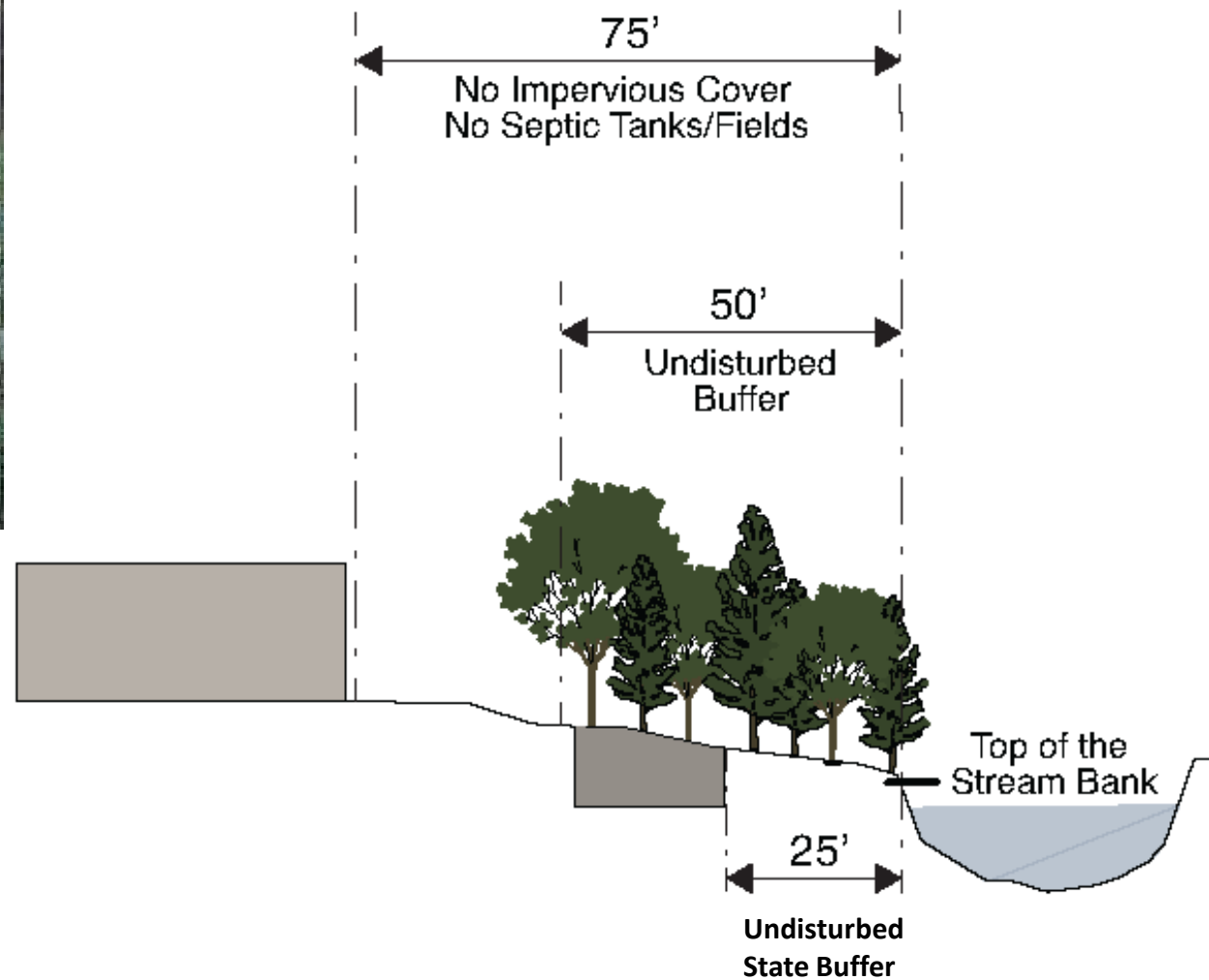


What is DBH?

The diameter at breast height (4.5 feet above the ground line) of the trunk of an existing tree, calculated by dividing the circumference of the trunk by 3.14.



What is a stream buffer?

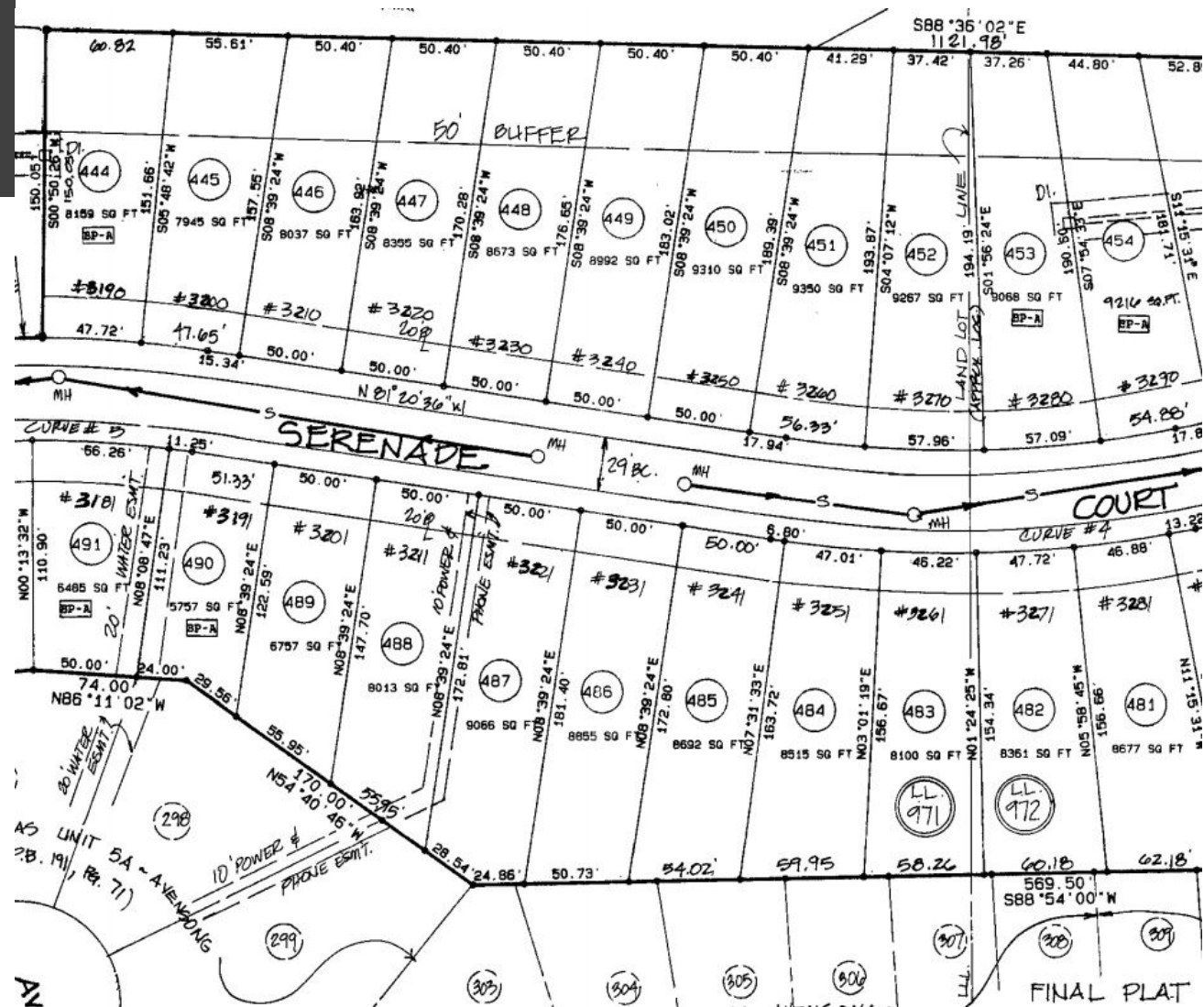


What is a zoning buffer?

- A natural undisturbed portion of a lot, except for approved access and utility crossings, which is set aside to achieve a visual barrier between the use on the lot and adjacent lots and uses. A buffer is achieved with natural vegetation and must be replanted subject to the approval of the director of community development or his or her designated agent when sparsely vegetated. Clearing of undergrowth from a buffer is prohibited except when accomplished under the supervision of the director of community development or his or her designated agent.

Example of Zoning Buffer

Final Plat for a subdivision



How to apply for a tree removal permit

- Fill out a tree removal permit application available on our website or City Hall
- Submit via email, regular mail, or drop off at City Hall



Where to submit the application



<https://www.cityofmiltonga.us/services/forms-permits/tree-removal>



arborist@cityofmiltonga.us

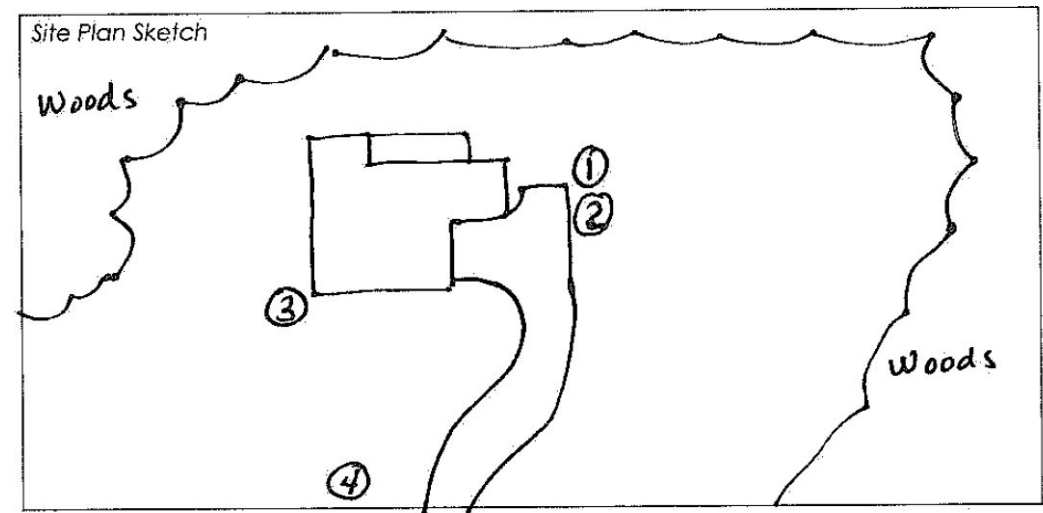


2006 Heritage Walk
Milton, GA 30004

MILTON 

What is needed for the application

- Contact information for applicant/homeowner
- Tree removal company
- Sketch showing location of trees to be removed
- List of trees to be removed by species and size



TREES REMOVED				TREES REPLACED			
Tree	Type	Size	Reason	Tree Letter	Type	Size	Planting Schedule
1	Leyland Cypress	5"	Dying				
2	Leyland Cypress	5"	Dying				
3	Red Maple	17"	Too close to house				
4	White Oak	21"	Structural damage				

What to expect

- Allow 10 business days for review
- Email from arborist with requirements
- Email from permit technician with invoice (if required) and permit



Permit Requirements

- Application fee - \$25 per healthy tree, with a maximum of \$150
- Tree Replacement – based on zoning, lot size, and existing canopy
- One year to complete tree replacement planting
- Email photos of new trees planted



Canopy Coverage Requirements

Zoning District	Minimum Tree Canopy Cover Required as a Percent of Total Lot Area
AG-1 up to 1.49 acres	57%
AG-1 at 1.5 – 2.99 acres	40%
AG-1 at 3 or more acres	25%
CUP, MHP, NUP	57%
C-1, C-2	30%
CBS, CS	50%
H	30%
MIX, O-I	40%
R-1, R-2, R-2A	57%
R-3, R-3A, R-4, R-4A	50%
R5, R-5A, R-6	40%
Suburban A	50%
T2	57%
T3	40%
T4, T4-Open, T4P, T4R, TR	30%
T5, T5R, T6	10%

Questions

Sandra DeWitt, City Arborist
Email: sandra.dewitt@cityofmiltonga.us
Phone: 678-242-2552

