

# MILTON TRAILS



# BLUEPRINT

COUNCIL BRIEFING | OCTOBER 16, 2017





























## MILTON TRAIL PLANNING

### 2007 THE MILTON TRAIL PLAN

Built upon Milton's network of existing gravel roads

### 2012 MILTON COMPREHENSIVE PARKS AND RECREATION MASTER PLAN

Updated 2007 Plan and looked beyond city owned right-of-way

### 2014 BIG CREEK GREENWAY CONNECTION STUDY

Explored linkages to nearby regional trail system

### 2016 MILTON COMPREHENSIVE PLAN (CTP)

Considered future bike/pedestrian routes as transportation projects

## **MILTON'S DESIRE FOR TRAILS**

### **2016 MILTON COMPREHENSIVE PLAN (CTP)**

50% of respondents use sidewalks, 42% use trails, and just 8% use bicycle facilities.

94% of respondents said they would be more likely to walk/bike if improvements were made.

Out of eight transportation priorities, residents chose walking and biking, second only to vehicular travel.



## **MILTON'S DESIRE FOR TRAILS**

### **2016 FULTON COUNTY TSPLOST**

Funding can be spent only on transportation improvements, such as roads, bridges, sidewalks, bicycle paths, and other transportation-related purposes.

### **2017 GREENSPACE FUND**

Bond funds to acquire land for parks, trails and greenspace including conservation land, wildlife habitat and natural areas. Overwhelmingly passed with 82% of voters in favor.

## **MILTON TRAILS BLUEPRINT**

- Rooted in the 2007 Trail Plan and Milton’s subsequent trail planning
- Increased demand for off-road connections (locally & regionally)
- Multiple funding sources now available to advance implementation
- Milton Greenspace Advisory Committee (MGAC) requires guidance before expending funds.

## GUIDING PRINCIPALS

### 1. PRIORITIZE ROUTES.

Land owned by the city and possible future aspirational partnership properties

### 2. CONNECT CITY ASSETS.

Parks, institutions, schools, villages and other civic destinations

### 3. SUPPORT REGIONAL CONNECTIVITY.

Including The Alpha Loop, The Big Creek Greenway, Path 400, and other future trail projects

### 4. IDENTIFY INITAIL HOME RUN PROJECT.

Ideally a 1.5 to 2.0 mile relatively flat off-road loop trail

**PROJECT SCHEDULE**



**AUGUST / SEPTEMBER**

- ✓ Project Management Team
- ✓ Parks & Recreation Advisory Board
- ✓ Greenspace Committee
- ✓ Equestrian Committee

**OCTOBER**

- ✓ Crabapple Festival
- ✓ Community Meeting
  - City Council Work Session

**NOVEMBER**

- City Council Adoption (tentative)

## **WHAT WE'VE HEARD**

- **People want off-road greenways.**
- **People want easy routes between destinations, including parks, schools, library, and villages.**
- **People want connections to nearby regional trails.**
- **People want safe routes and crossings for bikers, walkers, runners, and equestrian community.**
- **People want new investments to feel distinctively Milton.**

## **INVESTIGATED THREE TRAIL TYPES**

- **GREENWAYS** (off road)
- **SIDEPATHS** (along a road)
- **SHARED USE EQUESTRIAN TRAILS**

# MILTON TRAILS BLUEPRINT

## COUNCIL BRIEFING



Big Creek Greenway, Alpharetta

## GREENWAYS

Off-Road | 12-14 ft. width

Trails that are typically recreational and not along the side of the road; either paved or unpaved

**CONSTRUCTION COST PER MILE: ± \$3.5 TO 4 MILLION**



Gwinnett Trails, Gwinnett County

# MILTON TRAILS BLUEPRINT

## COUNCIL BRIEFING



## SIDEPATHS

Along a road | 12-14 ft. width

Trails that run along the side of a roadway, largely paved (asphalt or concrete)

**CONSTRUCTION COST PER MILE: ± \$3 MILLION**







## EQUESTRIAN TRAILS

Shared Use Gravel Roads

Trails built for, or shared with, equestrian community, preferably unpaved using natural materials.

**CONSTRUCTION COST PER MILE: ± \$3 MILLION**





**TRAIL AMENITIES**  
Lighting



**TRAIL AMENITIES**  
Lighting



**Grant's Trail**  
↑  
Teahow Dr.  
Trailhead 1 mile 2.2  
Ulysses S. Grant  
National Historic Site  
Trailhead 1 mile 2.1  
Sappington Rd.  
Trailhead 1 mile 2.2  
Share the Trail  
For Emergencies Dial 911  
St. Louis County Police  
Metabolic Fire & Rescue

**TRAIL AMENITIES**  
Wayfinding



**TRAIL AMENITIES**  
Wayfinding



**TRAIL AMENITIES**  
Wayfinding



**TRAIL AMENITIES**  
Wayfinding

**TRAIL AMENITIES**  
Wayfinding



**TRAIL AMENITIES**  
Wayfinding



# TRAIL AMENITIES

## Surface Treatments



# TRAIL AMENITIES

## Surface Treatments



# TRAIL AMENITIES

## Surface Treatments



# TRAIL AMENITIES

## Surface Treatments



# TRAIL AMENITIES

## Street Furniture





# TRAIL AMENITIES

Crossings

## **COST CONSIDERATIONS AND IMPACTS**

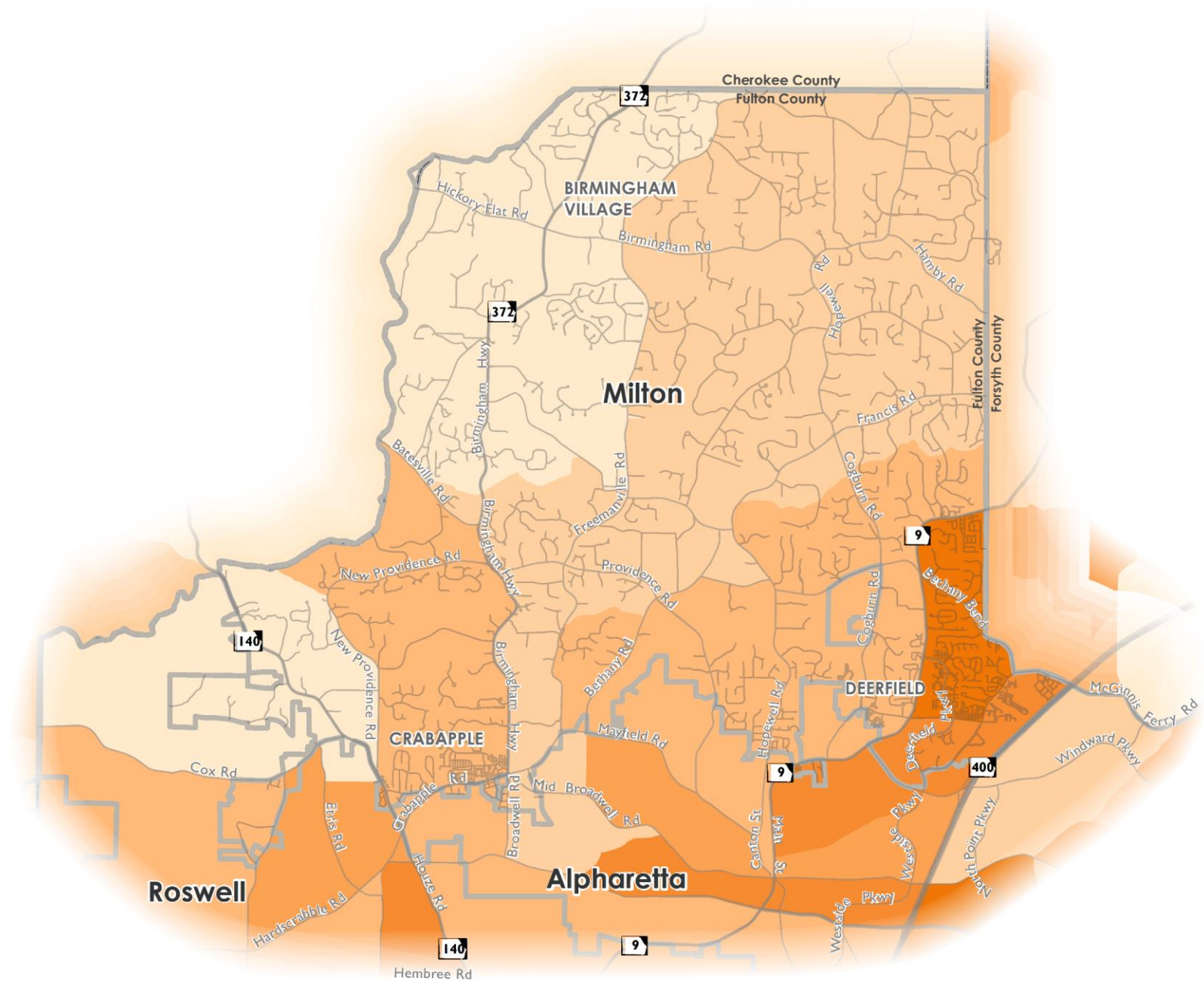
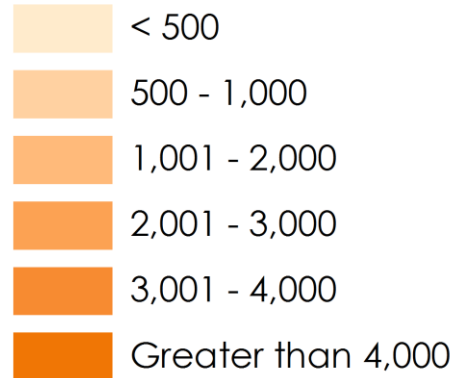
- **Amenities**
- **Gravel**
- **Concrete**
- **Signage**
- **Drainage**
- **Erosion**
- **Wall**
- **Traffic Control**
- **Grading**
- **Lighting**

# MILTON TRAILS BLUEPRINT

## EXISTING CONDITIONS

### Population Density

Total Population / Square Miles





# MILTON TRAILS BLUEPRINT

## EXISTING CONDITIONS

### Trails and Bicycle Facilities

 Milton Sidepaths

 Milton Park Trails

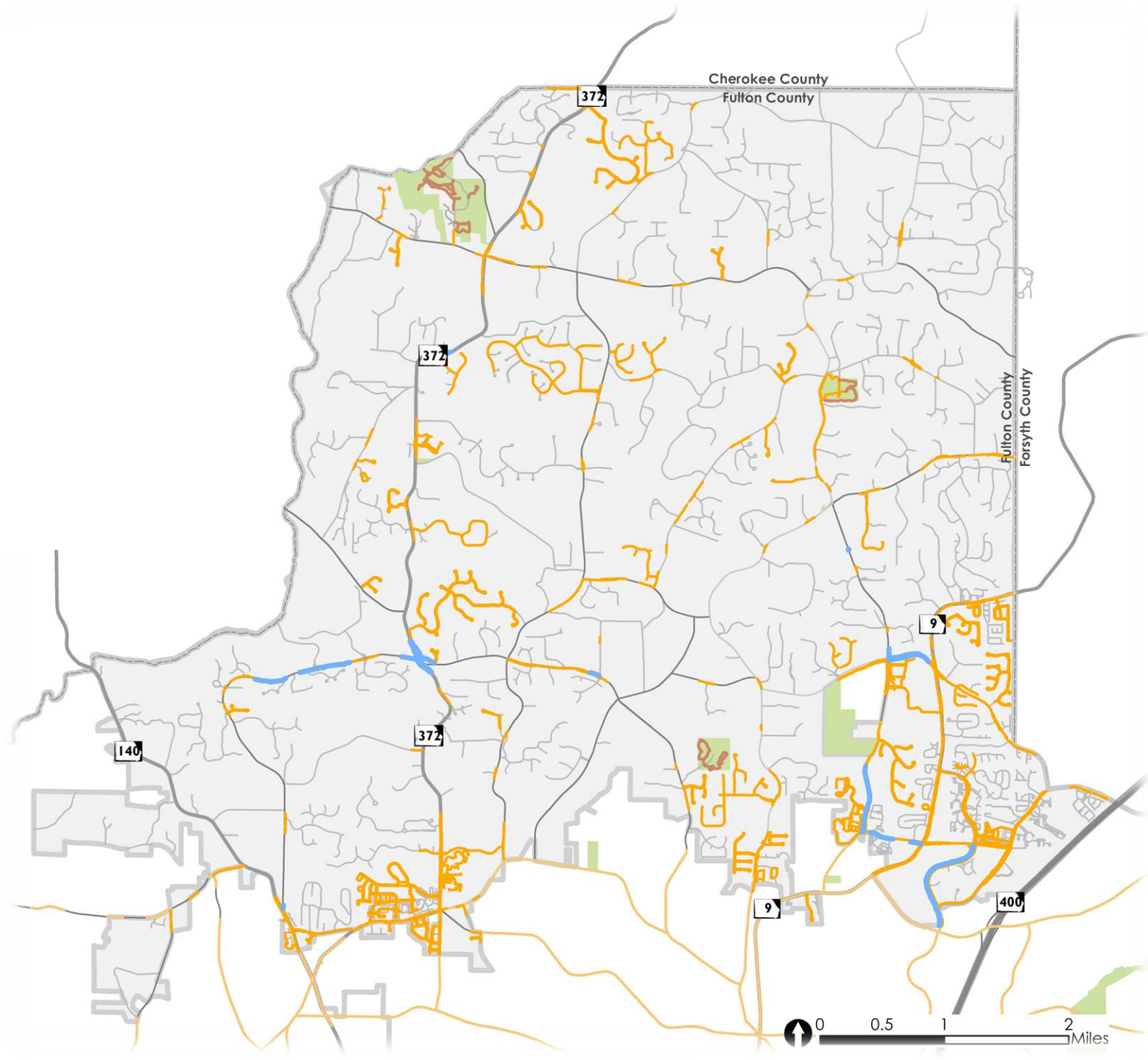
### Sidewalk Facilities

 Milton Sidewalks

 North Fulton Sidewalks

### Background

 Parks

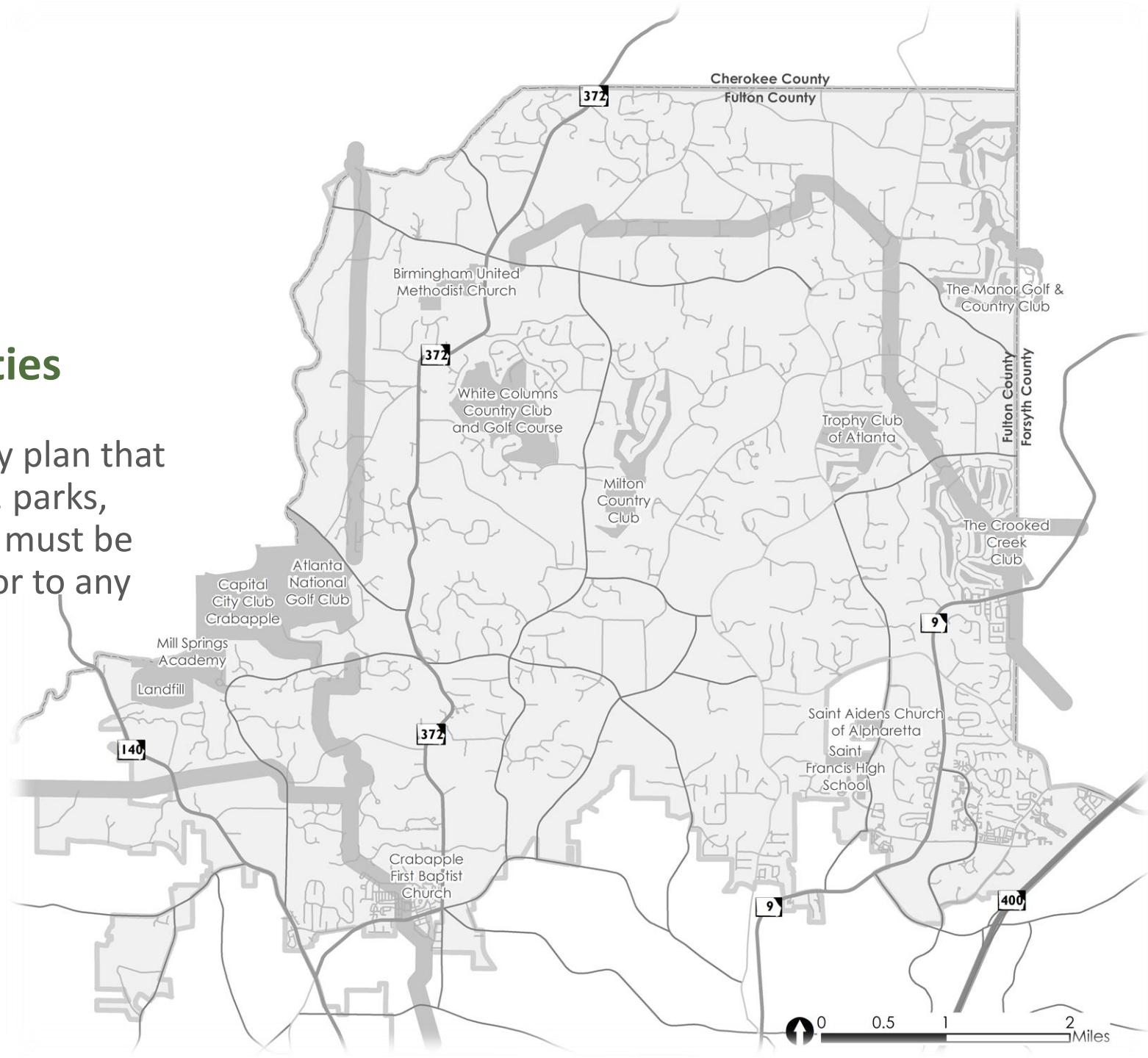


# MILTON TRAILS BLUEPRINT

## FUTURE CONSIDERATIONS

### Aspirational Partnership Properties

For sections of the Milton trails/greenway plan that are outside of publicly owned spaces (i.e. parks, right-of-way and facilities), authorization must be obtained from the property owner(s) prior to any development of that trail section.



Aspirational Partnership Properties (Private Ownership)

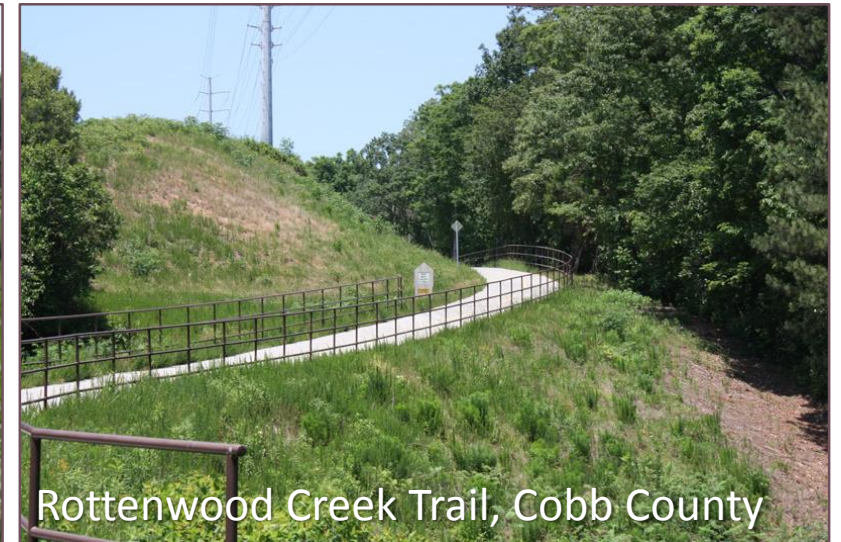
# MILTON TRAILS BLUEPRINT

## COUNCIL BRIEFING



## Easements

Looked at example trails, design considerations per utilities, and land ownership.



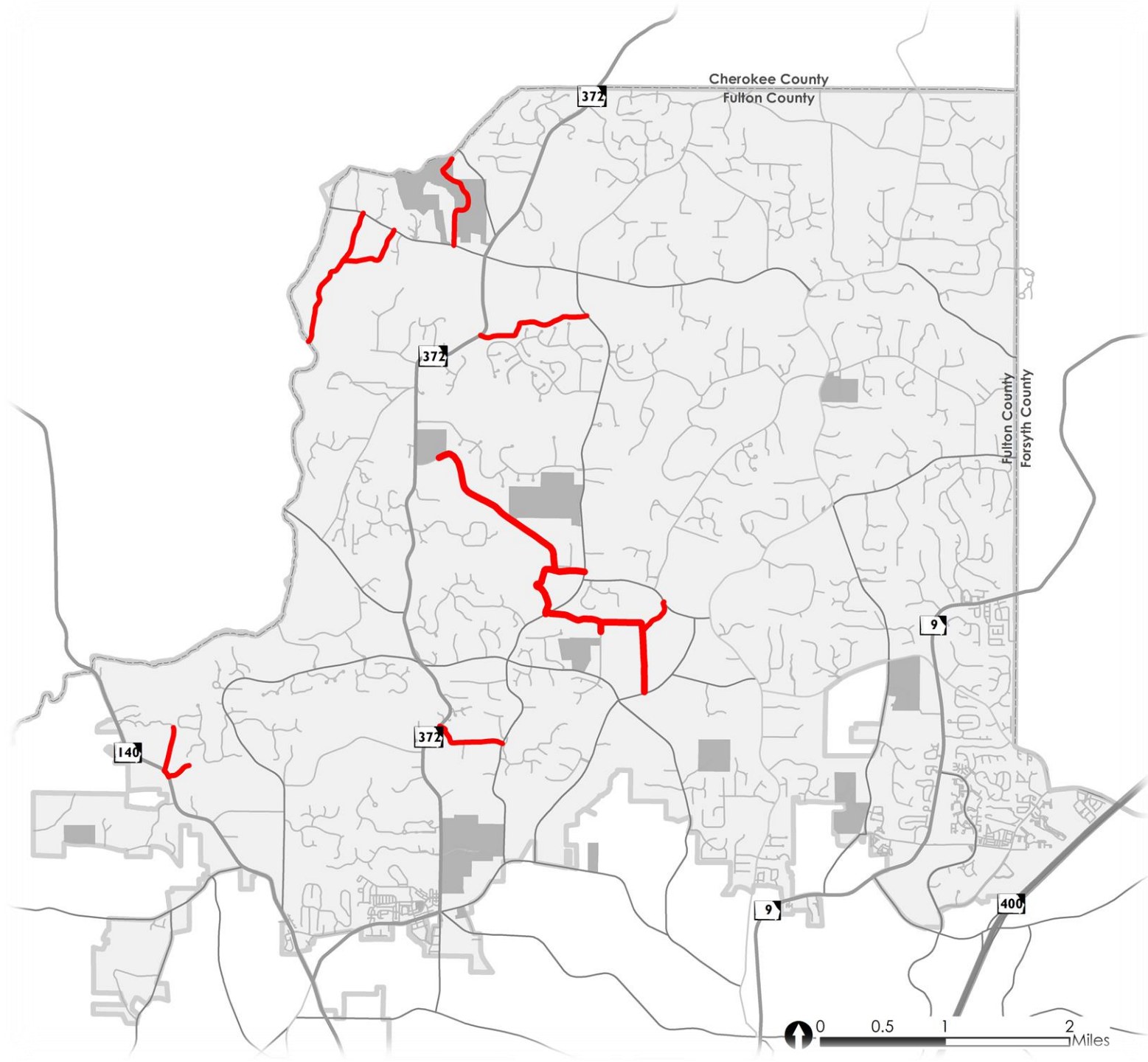
MILTON TRAILS  
 BLUEPRINT

**DRAFT TRAIL NETWORK**

# MILTON TRAILS BLUEPRINT

## DRAFT TRAIL NETWORK

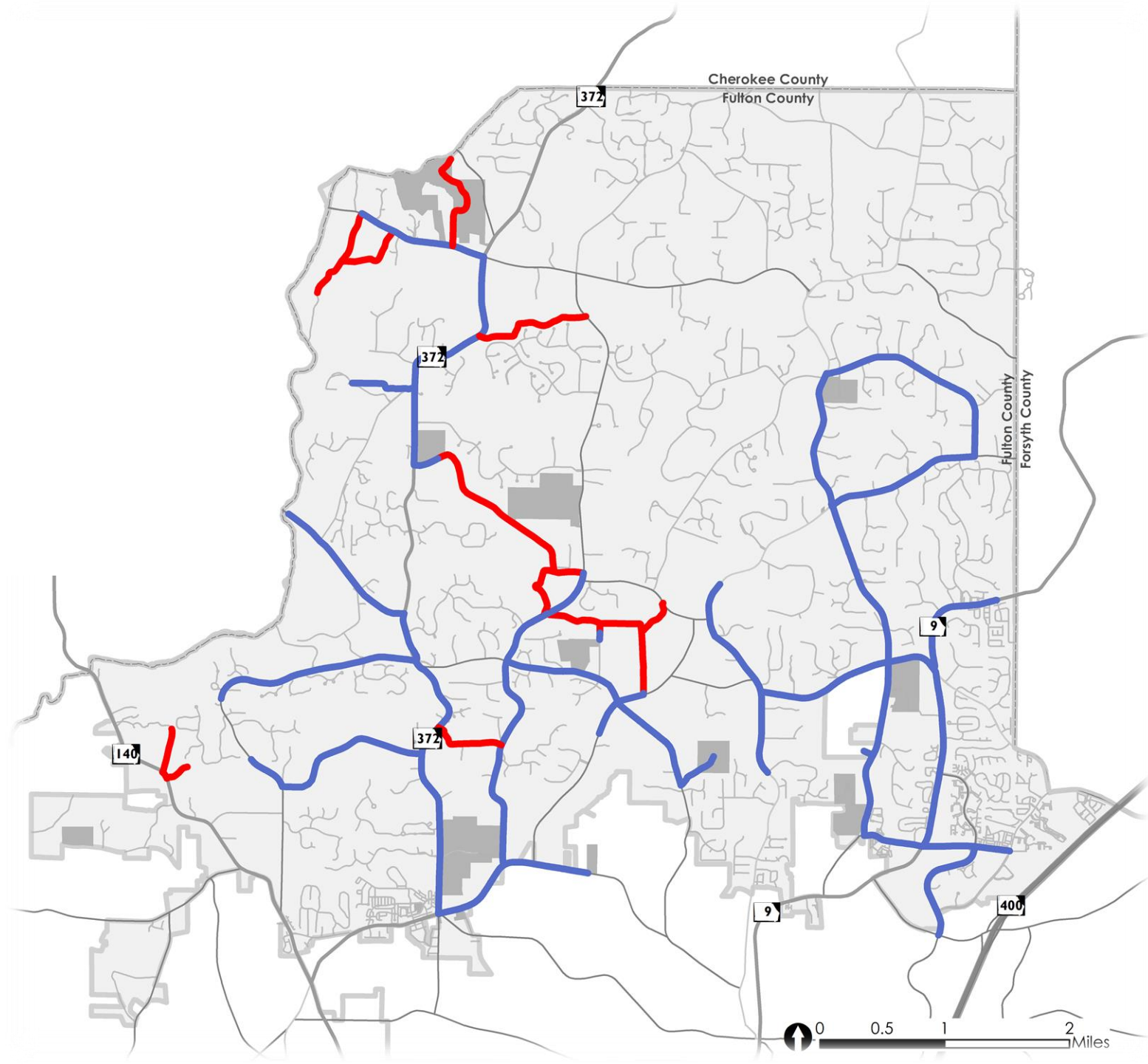
- Shared Use Equestrian Trails



# MILTON TRAILS BLUEPRINT

## DRAFT TRAIL NETWORK

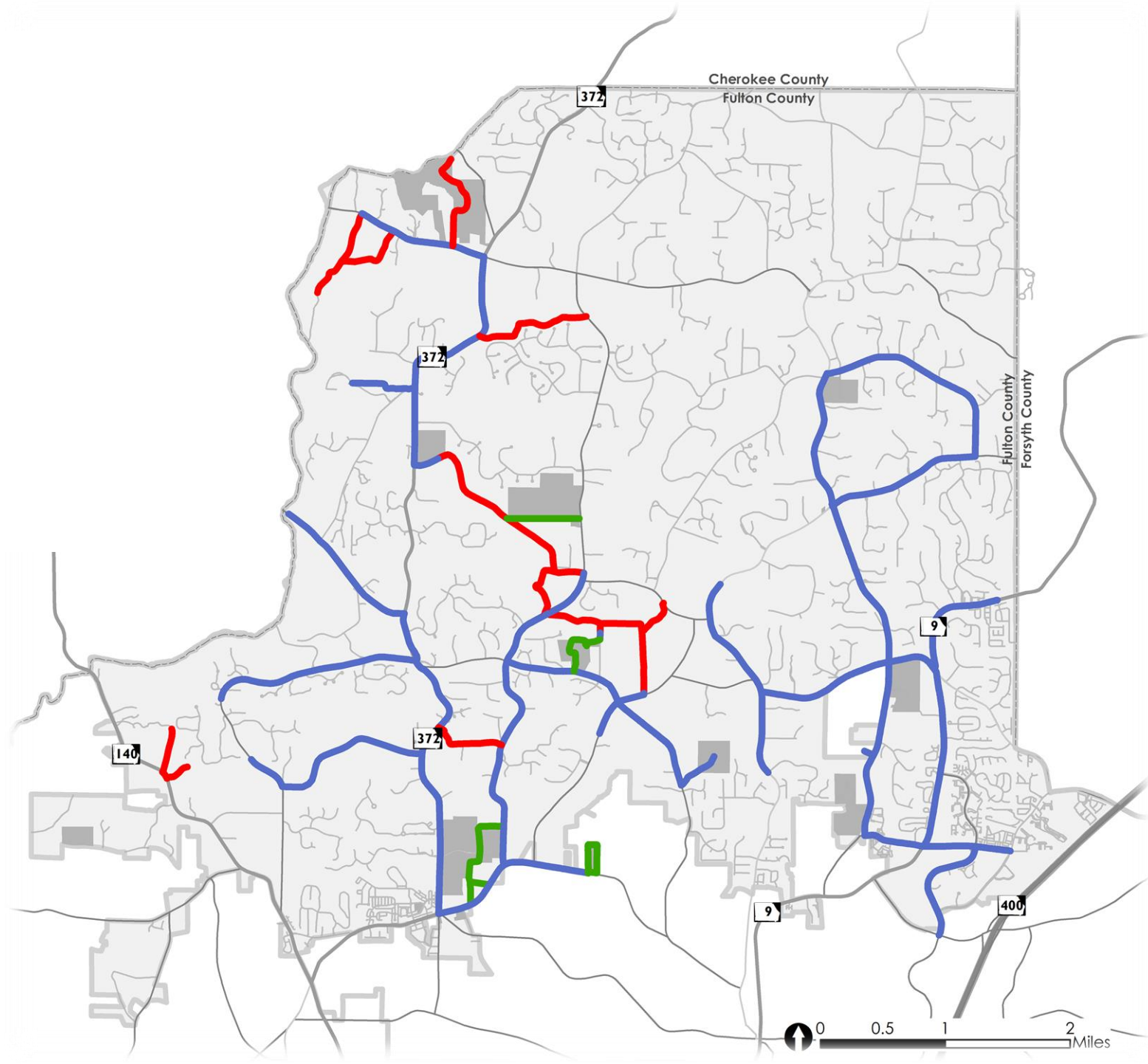
- Shared Use Equestrian Trails
- Proposed Sidepaths



# MILTON TRAILS BLUEPRINT

## DRAFT TRAIL NETWORK

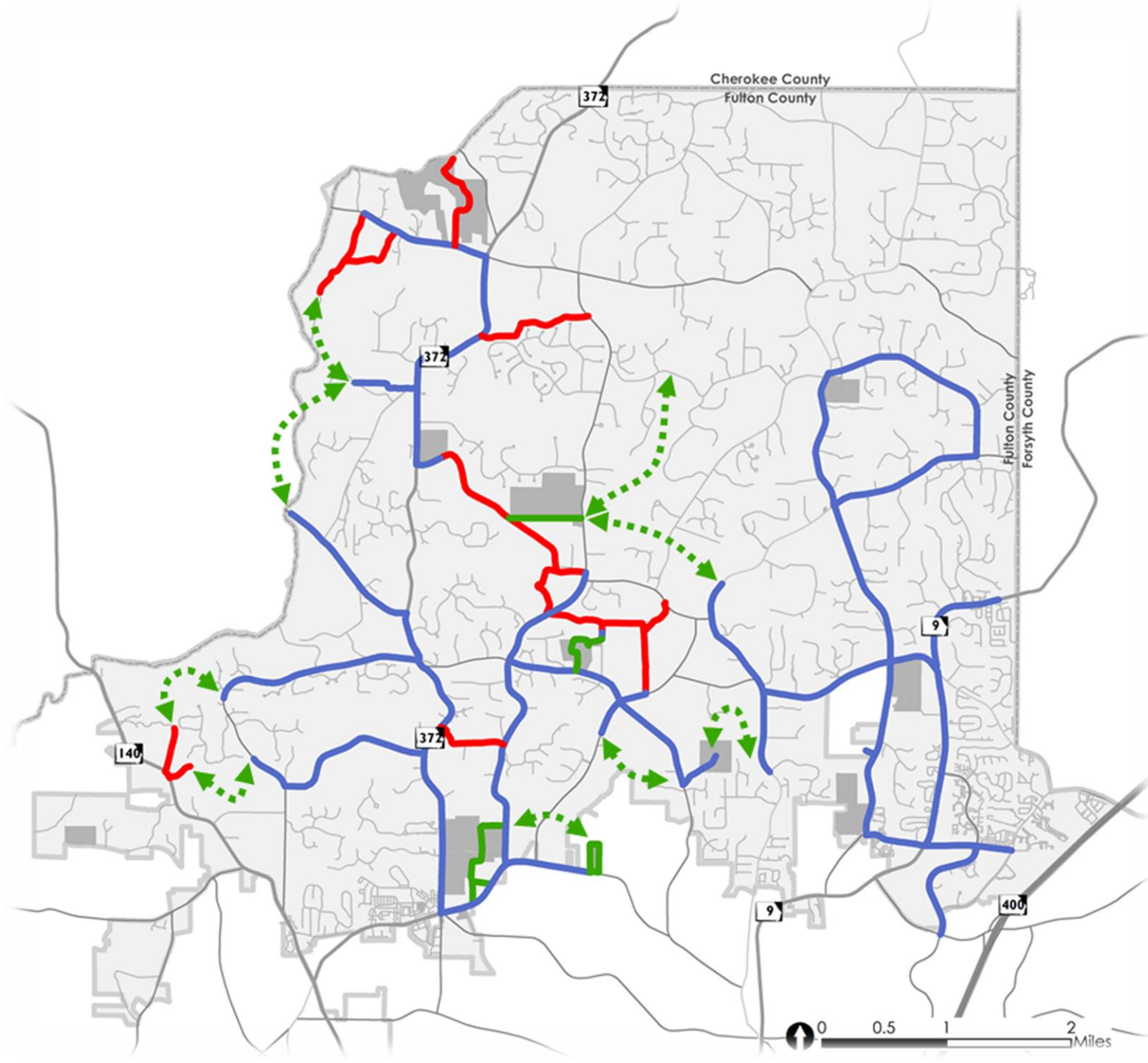
- Shared Use Equestrian Trails
- Proposed Sidepaths
- Proposed Greenways



# MILTON TRAILS BLUEPRINT

## DRAFT TRAIL NETWORK

- Shared Use Equestrian Trails
- Proposed Sidepaths
- Proposed Greenways
- Aspirational Greenways

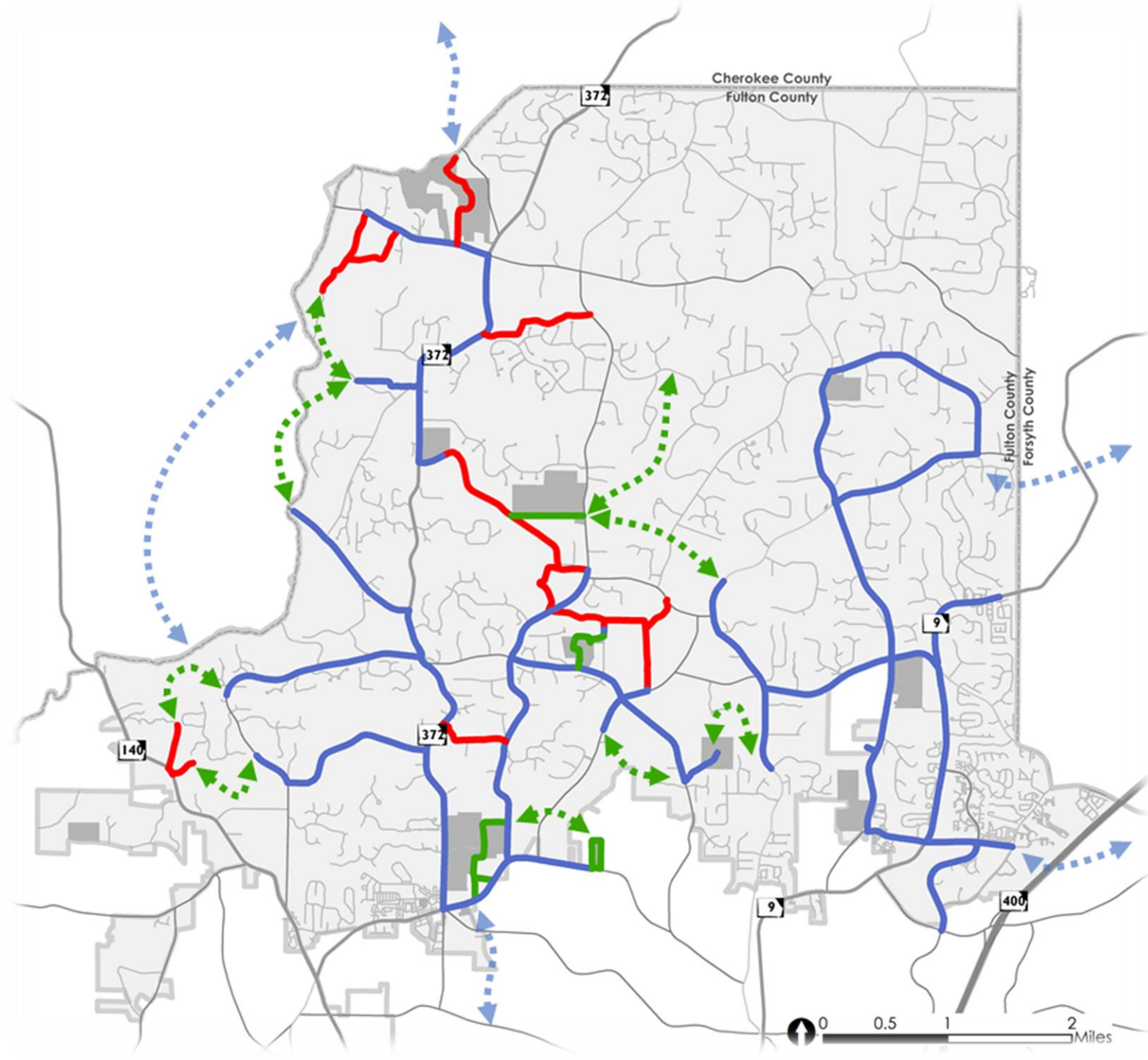




# MILTON TRAILS BLUEPRINT

## DRAFT TRAIL NETWORK

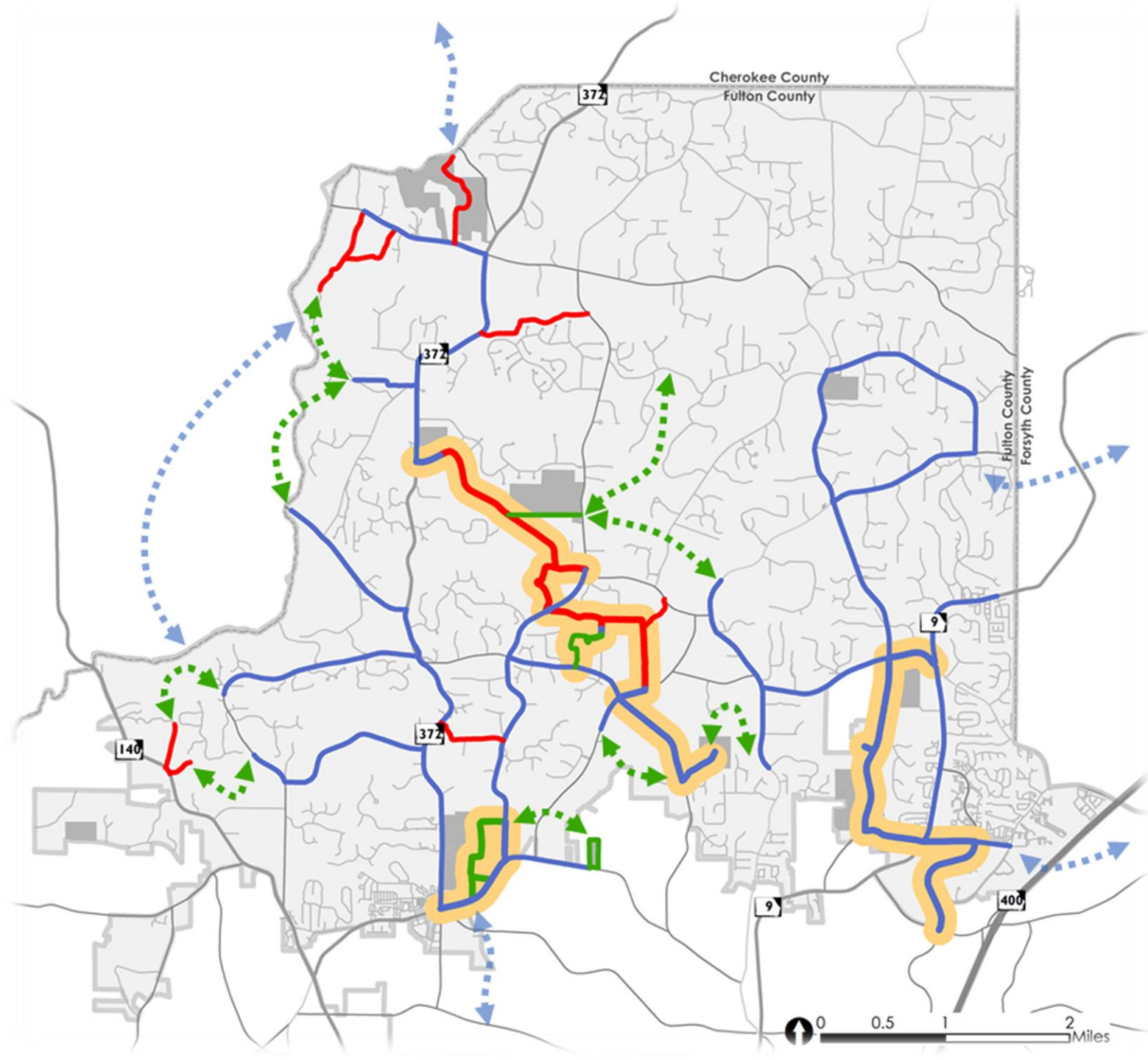
- Shared Use Equestrian Trails
- Proposed Sidepaths
- Proposed Greenways
- Aspirational Greenways
- Aspirational Regional Connections



# MILTON TRAILS BLUEPRINT

## DRAFT TRAIL NETWORK

- Shared Use Equestrian Trails
- Proposed Sidepaths
- Proposed Greenways
- Aspirational Greenways
- Aspirational Regional Connections
- **Golden Opportunities  
(Priority Trail Options)**

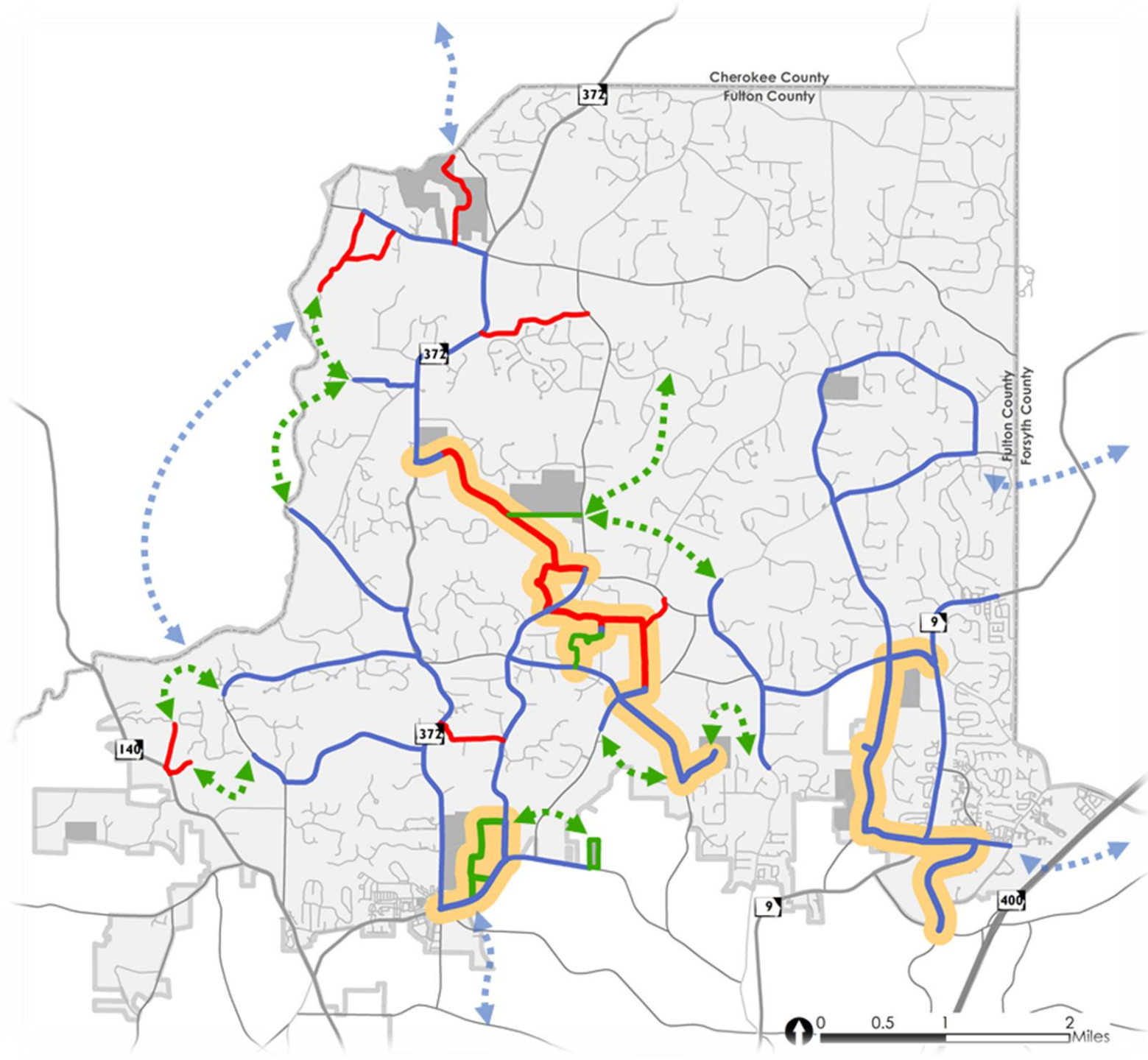


# MILTON TRAILS BLUEPRINT

## DRAFT TRAIL NETWORK

- **SIDEPATHS**  
32.8 miles
- **GREENWAYS**  
11.4 miles
- **SHARED EQUESTRIAN**  
8.7 miles

**TOTAL 52.9 MILE TRAIL NETWORK**



# MILTON TRAILS BLUEPRINT

## GOLDEN OPPORTUNITIES

### Priority Trail Options

#### 1. CRABAPPLE LOOP

2.0 miles

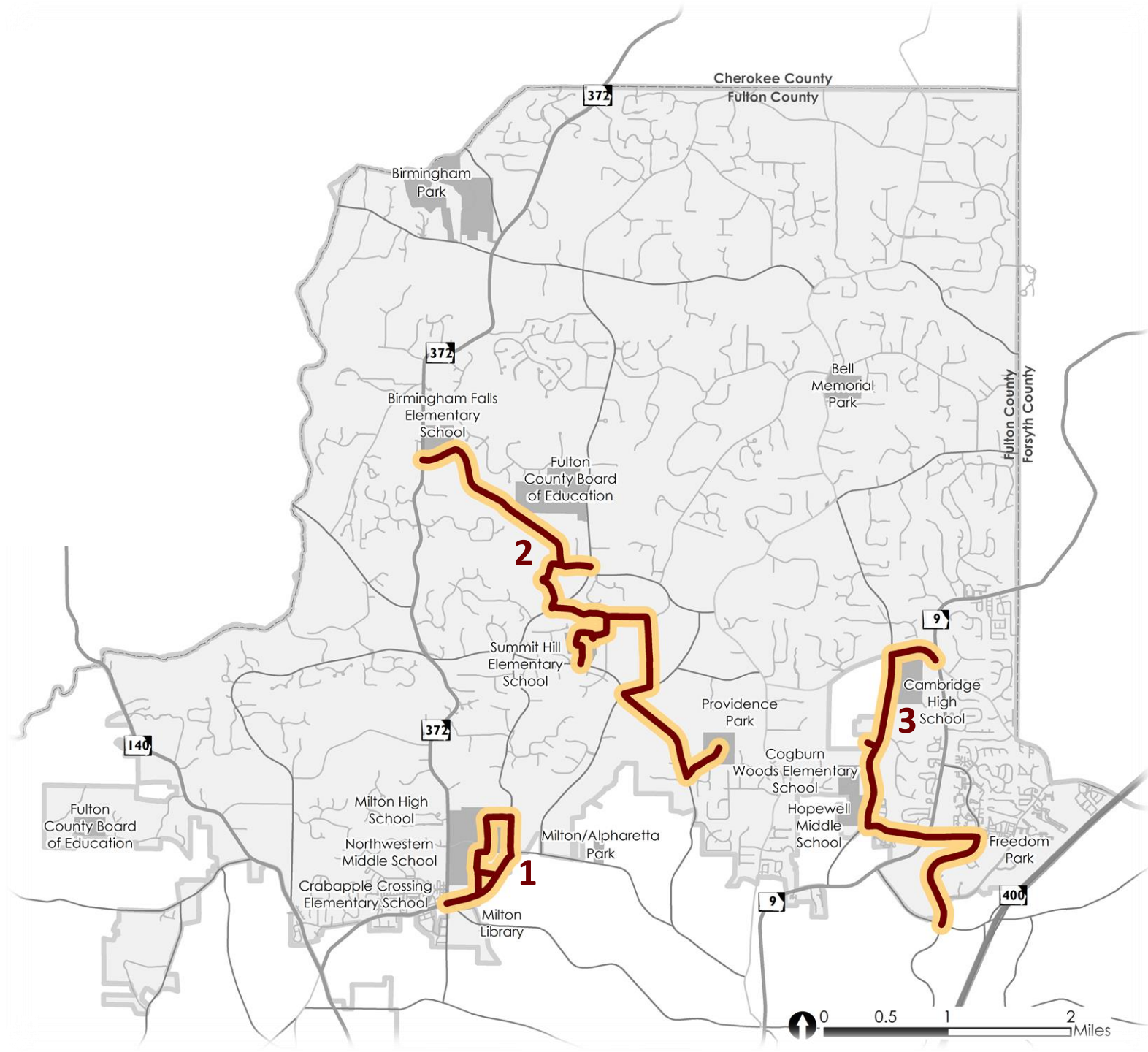
#### 2. CENTRAL MILTON TRAILS

5.9 miles

#### 3. DEERFIELD CONNECTORS

3.8 miles (+15 miles)

-  Golden Opportunity Trails
-  Community Assets (Public Resources)



# MILTON TRAILS BLUEPRINT

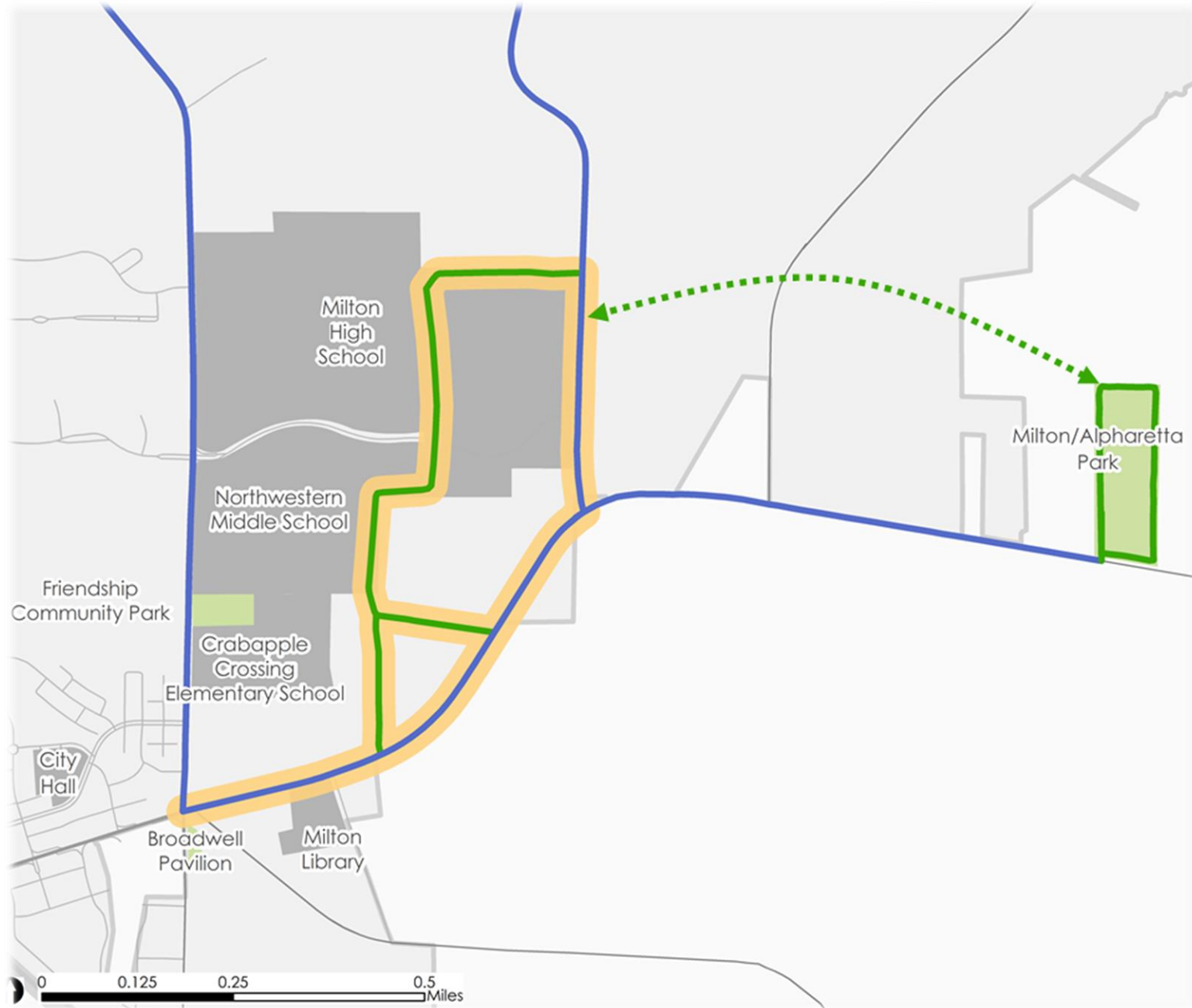
## GOLDEN OPPORTUNITY #1

### CRABAPPLE LOOP

2 miles loop trail

Opportunity to connect schools, library, and City Hall. Expand to “Mayfield Park” in future.

Greenway	1 mile
Sidepaths	1 mile



# MILTON TRAILS BLUEPRINT

## GOLDEN OPPORTUNITY #2

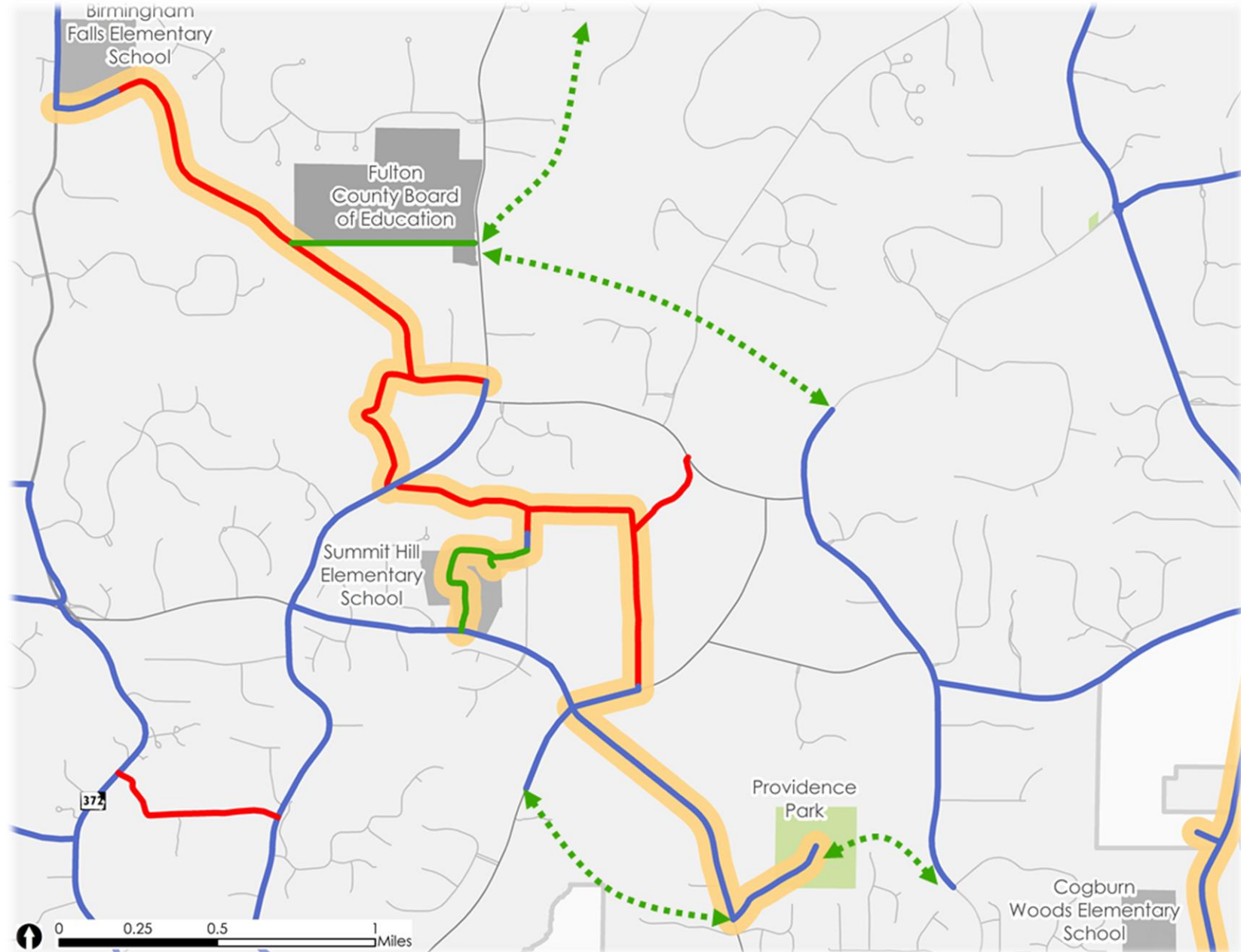
### CENTRAL MILTON TRAILS

5.5 miles trail network

Opportunity to connect Birmingham Falls and Summit Elementary Schools, and Providence Park via existing gravel roads.

Three trailheads and improve road crossings.

- Greenway 0.2 miles
- Sidepaths 1.7 miles
- Equestrian 3.6 miles



# MILTON TRAILS BLUEPRINT

## GOLDEN OPPORTUNITY #3

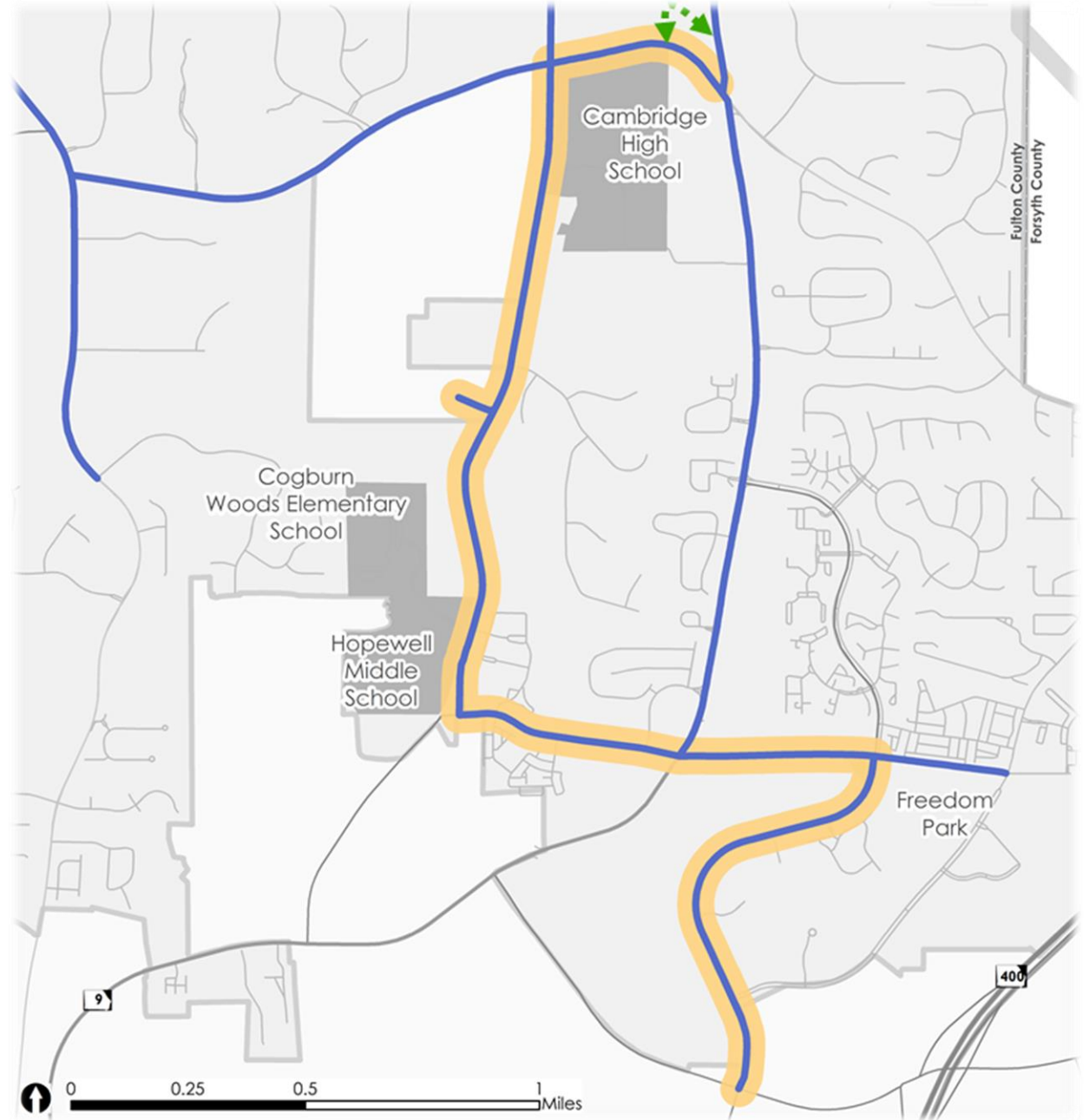
### DEERFIELD CONNECTORS

3.8 mile system of trails

Opportunity to connect Cogburn Wood's Elementary, Hopewell Middle, and Cambridge High School (and other institutions) to Deerfield neighborhoods.

Leverage redesign of Highway 9 to create full loop.

- Sidepaths 3.8 miles



# MILTON TRAILS



# BLUEPRINT

COUNCIL BRIEFING | OCTOBER 16, 2017